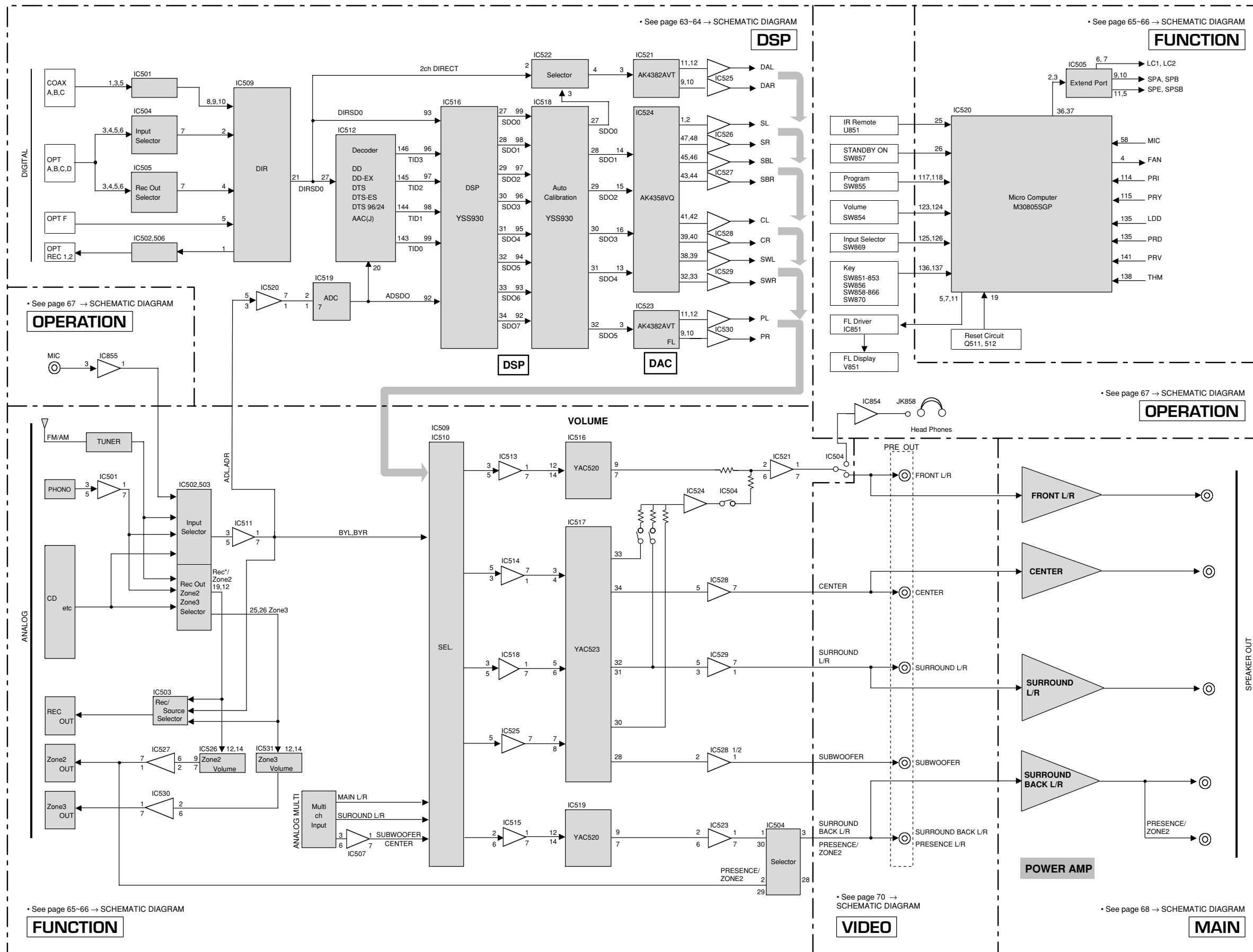
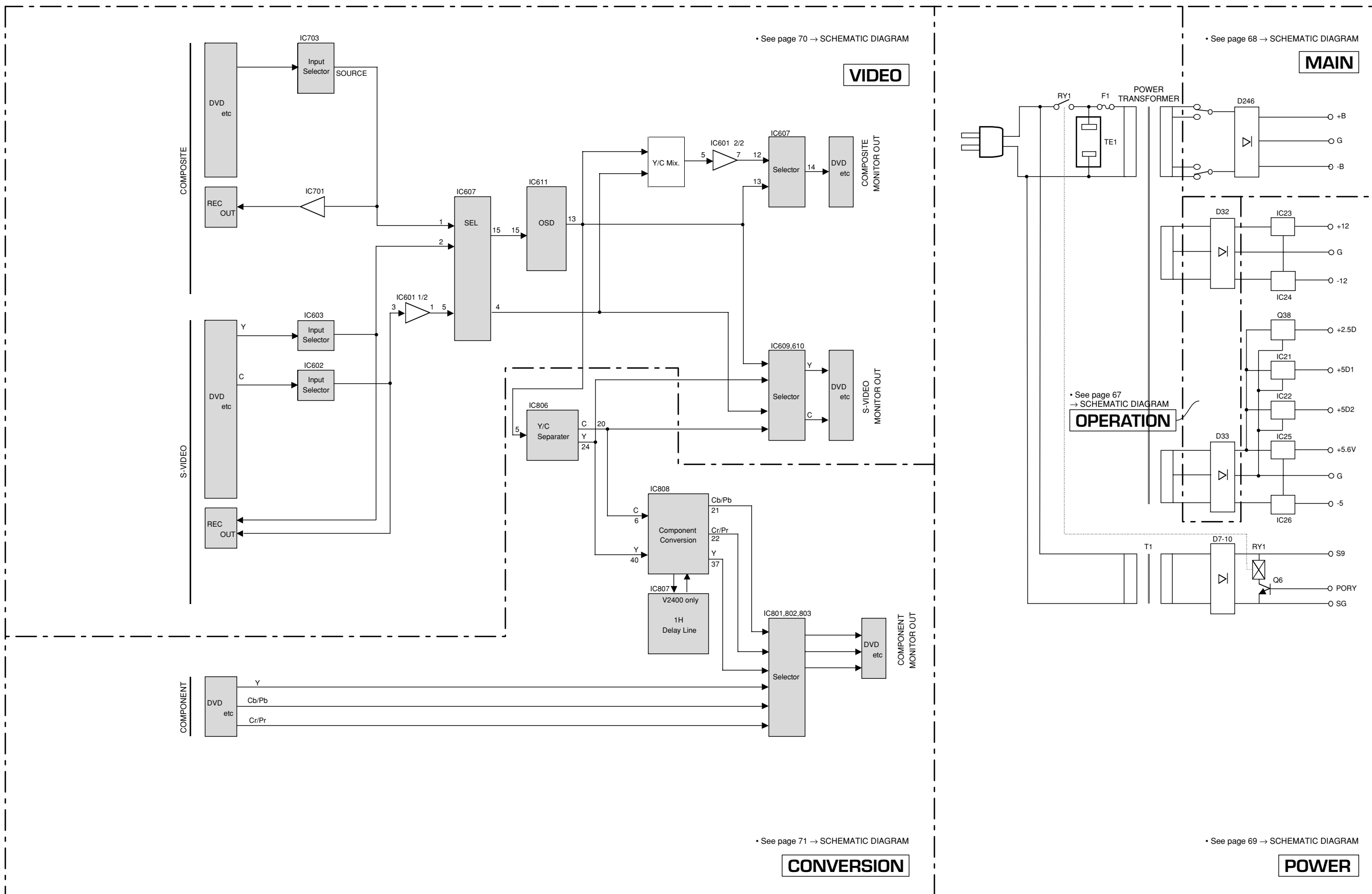


# BLOCK DIAGRAM (1/2)



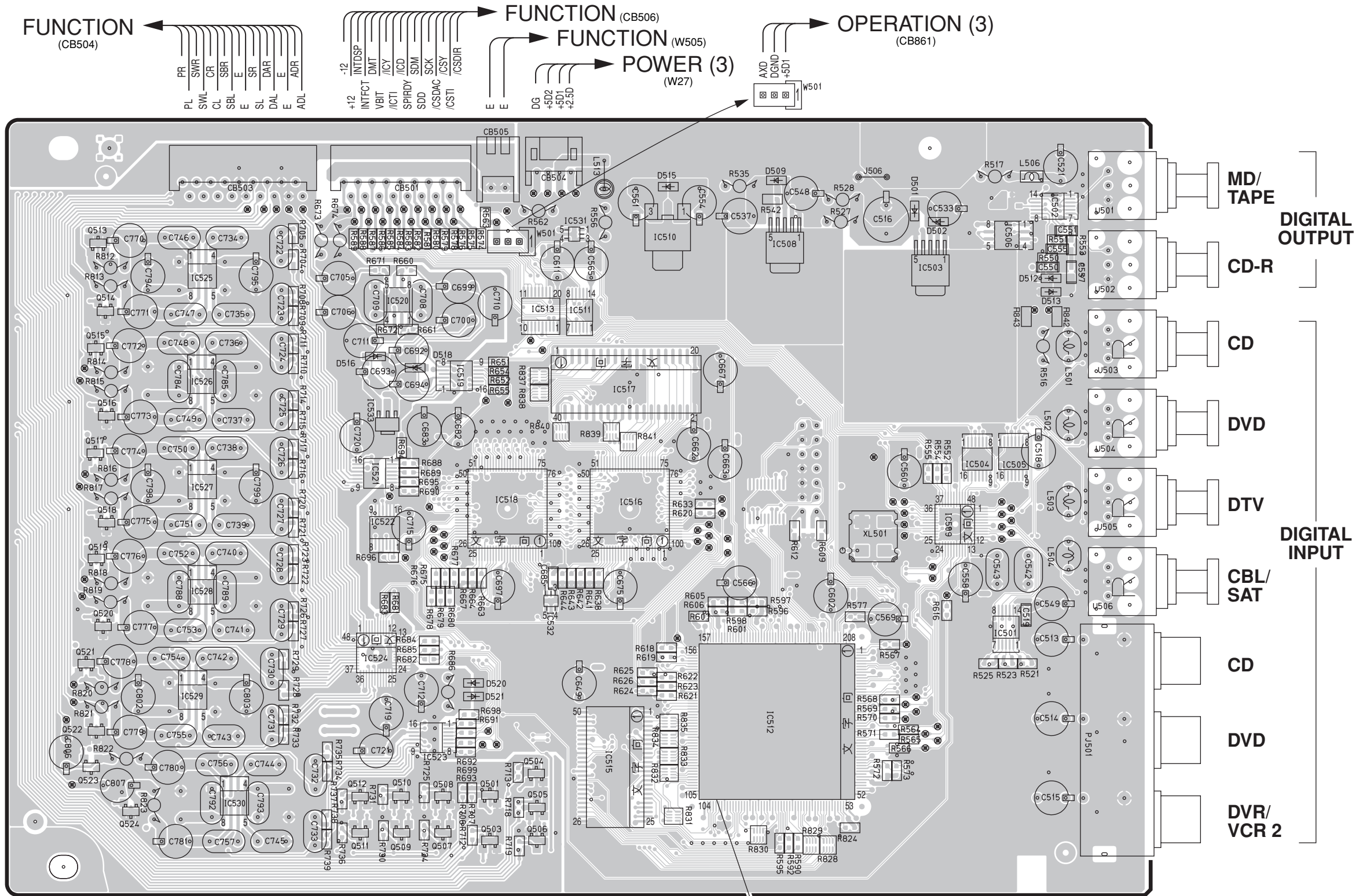
1 ■ BLOCK DIAGRAM (2/2)



PRINTED CIRCUIT BOARD (Foil side)

DSP P.C.B. (Side A) Lead Solder Used

• Semiconductor Location



Ref. No.	Location
D501	F3
D502	F3
D509	F3
D512	G3
D513	G3
D515	E3
D516	C4
D518	C4
D520	D6
D521	D6
IC501	G5
IC502	G3
IC503	F3
IC504	G4
IC505	G4
IC506	G3
IC508	F3
IC509	G5
IC510	E3
IC511	D3
IC512	E6
IC513	D3
IC515	E6
IC516	E4
IC517	E4
IC518	D4
IC519	D4
IC520	C3
IC521	C4
IC522	C5
IC523	B6
IC524	C5
IC525	B3
IC526	B4
IC527	B4
IC528	B5
IC529	B6
IC530	B6
IC531	D3
IC532	D5
Q501	D6
Q503	D6
Q504	D6
Q505	D6
Q506	D6
Q507	D6
Q508	D6
Q509	C6
Q510	C6
Q511	C6
Q512	C6
Q513	B3
Q514	B3
Q515	B4
Q516	B4
Q517	B4
Q518	B5
Q519	B5
Q520	B5
Q521	B5
Q522	B6
Q523	B6
Q524	B6

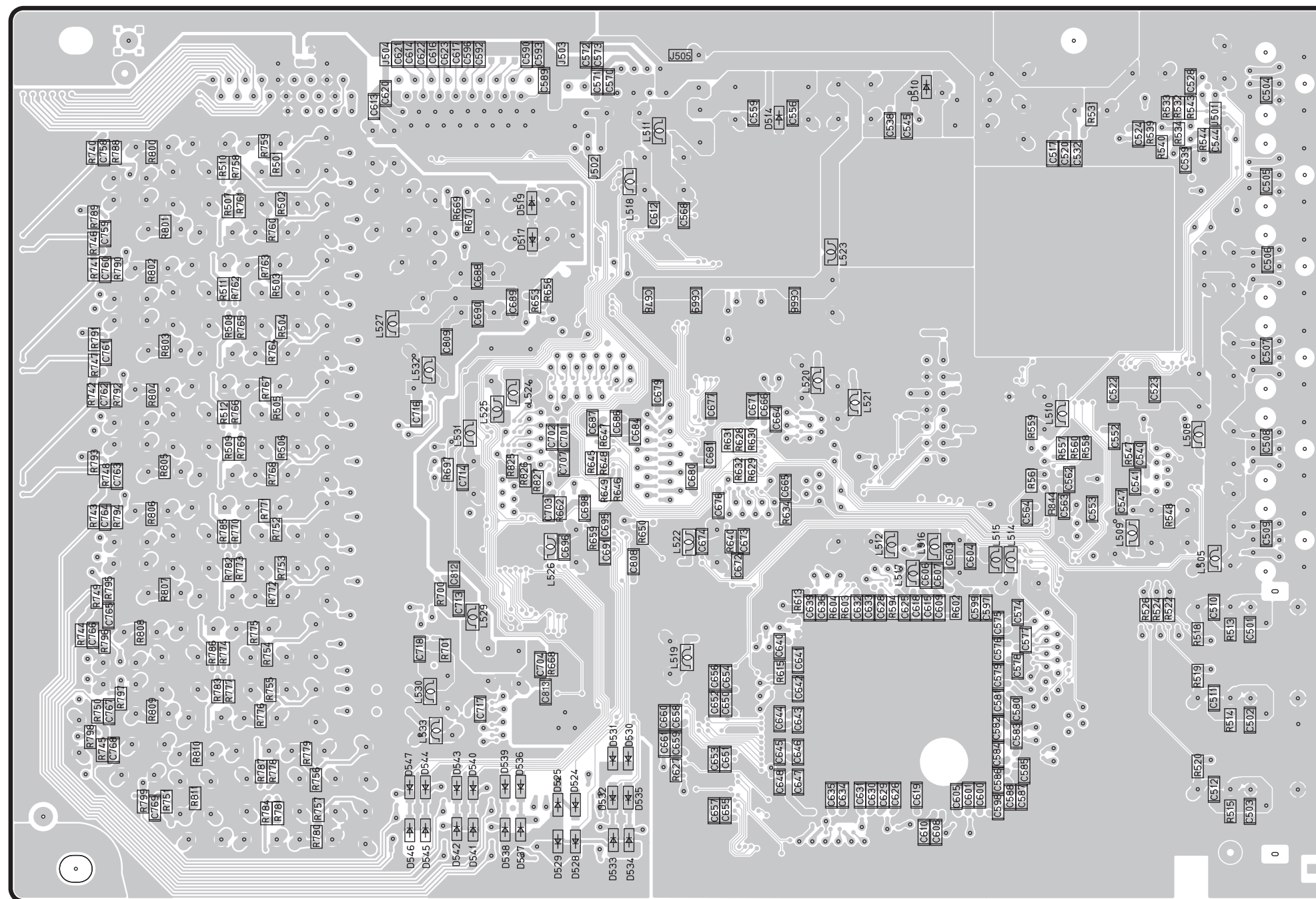
No service part available

• Semiconductor Location

Ref. No.	Location
D510	F2
D514	E2
D517	D3
D519	D3
D524	D6
D525	D6
D528	D6
D529	D6
D530	D6
D531	D6
D532	D6
D533	D6
D534	D6
D535	D6
D536	D6
D537	D6
D538	C6
D539	C6
D540	C6
D541	C6
D542	C6
D543	C6
D544	C6
D545	C6
D546	C6
D547	C6

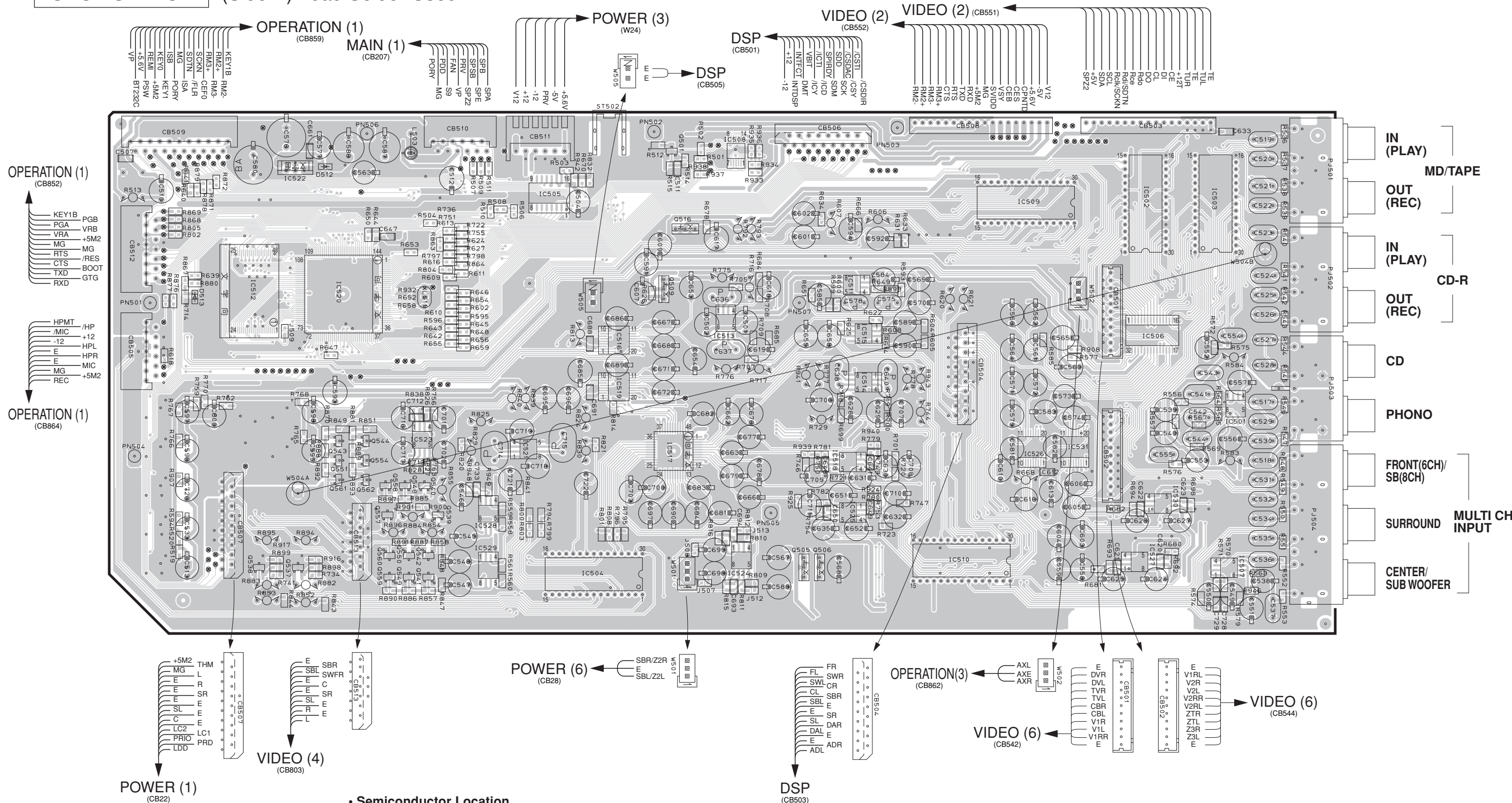
■ PRINTED CIRCUIT BOARD (Foil side)

DSP P.C.B. (Side B) Lead Free Solder Used



PRINTED CIRCUIT BOARD (Foil side)

FUNCTION P.C.B. (Side A) Lead Solder Used

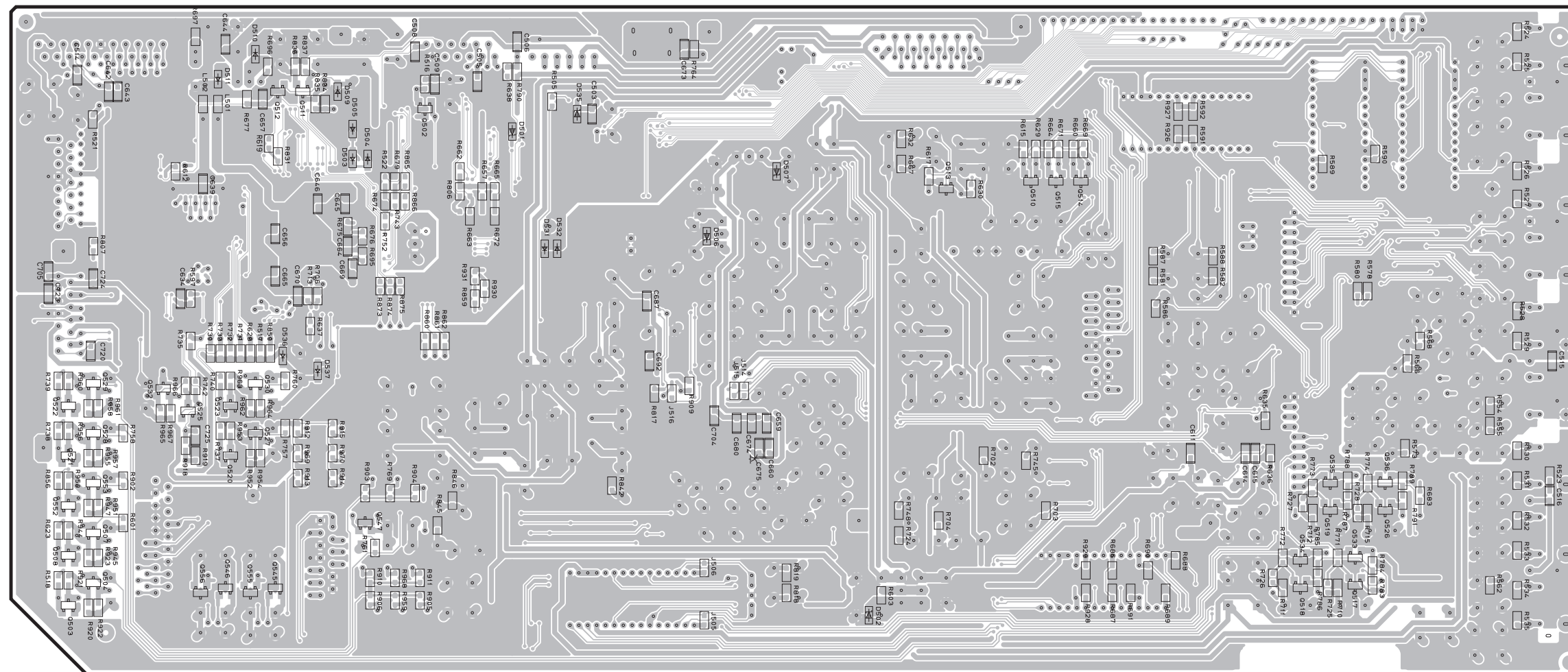


• Semiconductor Location

Ref. No.	Location	Ref. No.	Location	Ref. No.	Location	Ref. No.	Location	Ref. No.	Location	Ref. No.	Location	Ref. No.	Location	Ref. No.	Location	Ref. No.	Location
D512	C3	IC505	D3	IC511	F3	IC517	E4	IC523	C4	IC529	D5	Q509	E3	Q541	C5	Q550	C5
D513	B3	IC506	H4	IC512	B3	IC518	F4	IC524	E5	IC530	H5	Q516	E3	Q542	C5	Q551	C4
IC501	H4	IC507	H5	IC513	E4	IC519	E4	IC525	F5	IC531	H4	Q537	C5	Q543	C4	Q554	C4
IC502	H3	IC508	E2	IC514	F4	IC520	C3	IC526	G4	Q501	E2	Q538	B5	Q544	C4	Q557	C5
IC503	H3	IC509	G3	IC515	F4	IC521	D4	IC527	H5	Q505	F5	Q539	D5	Q548	C5	Q558	C5
IC504	E5	IC510	G5	IC516	E4	IC522	C3	IC528	D5	Q506	F5	Q540	C5	Q549	C5	Q559	C5

1 ■ PRINTED CIRCUIT BOARD (Foil side)

FUNCTION P.C.B. (Side B) Lead Free Solder Used



• Semiconductor Location

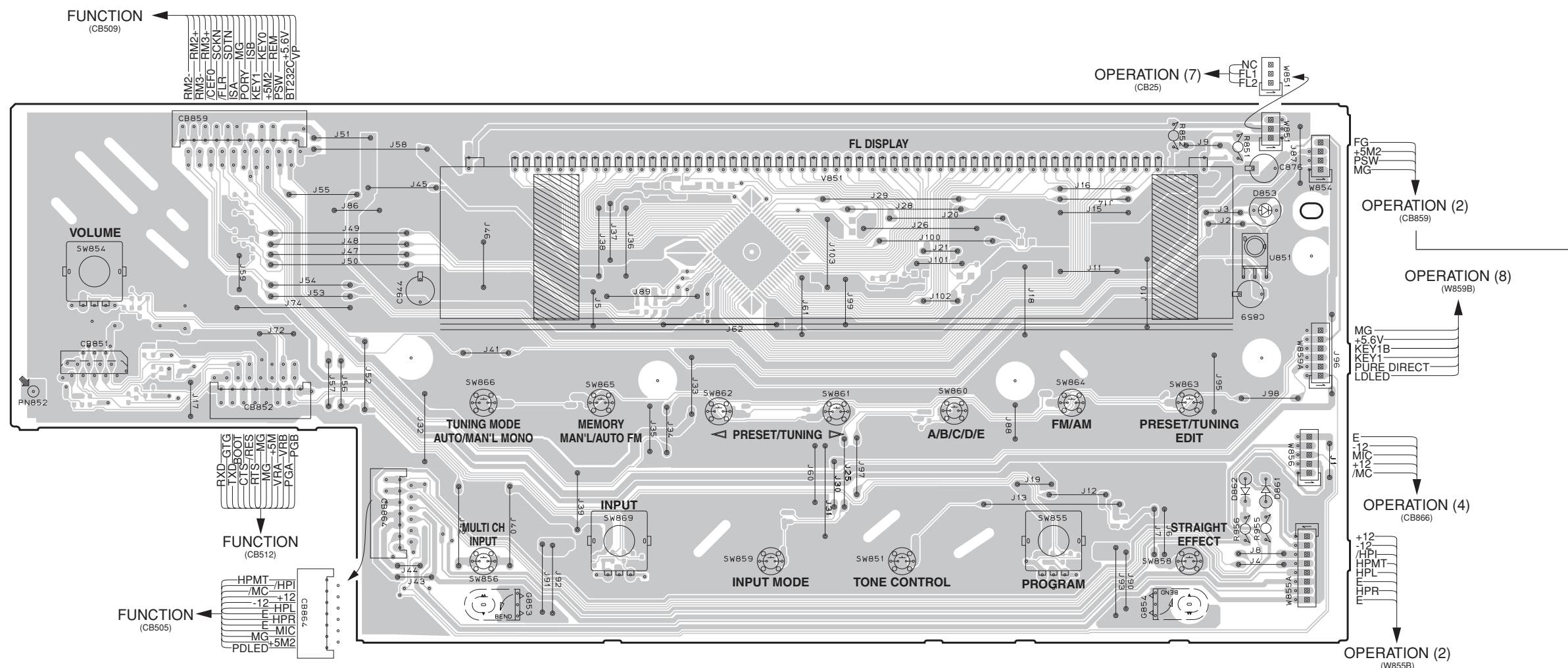
Ref. No.	Location	Ref. No.	Location	Ref. No.	Location	Ref. No.	Location	Ref. No.	Location	Ref. No.	Location	Ref. No.	Location		
D501	C2	D509	C2	D537	B4	Q511	B2	Q519	G4	Q527	B4	Q535	G4	Q555	B5
D502	E5	D510	B2	Q502	C2	Q512	B2	Q520	B4	Q528	A4	Q536	H4	Q556	B5
D503	C3	D511	B2	Q503	A5	Q513	F3	Q521	A4	Q529	A4	Q545	B5		
D504	C3	D531	D3	Q504	A5	Q514	F3	Q522	A4	Q530	B4	Q546	B5		
D505	C2	D532	D3	Q507	A4	Q515	F3	Q523	B4	Q532	B4	Q547	C4		
D506	D3	D535	D2	Q508	A5	Q517	G5	Q525	B4	Q533	G5	Q552	A4		
D507	E3	D536	B4	Q510	F3	Q518	G5	Q526	H4	Q534	G5	Q553	A4		

Circuit No.	U, C	A
C517, 518	X	O

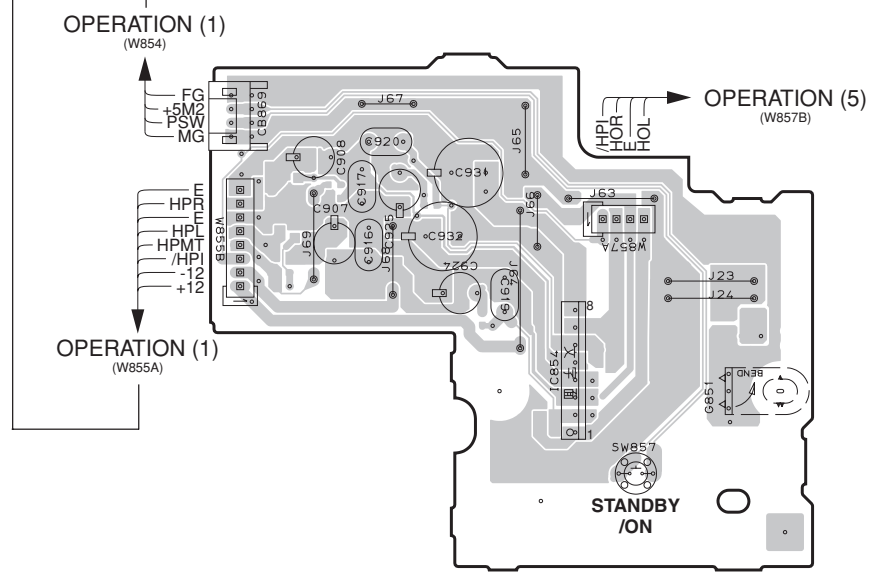
X : NOT USED  
O : USED / APPLICABLE

PRINTED CIRCUIT BOARD (Foil side)

OPERATION (1) P.C.B. (Side A)



OPERATION (2) P.C.B. (Side A)

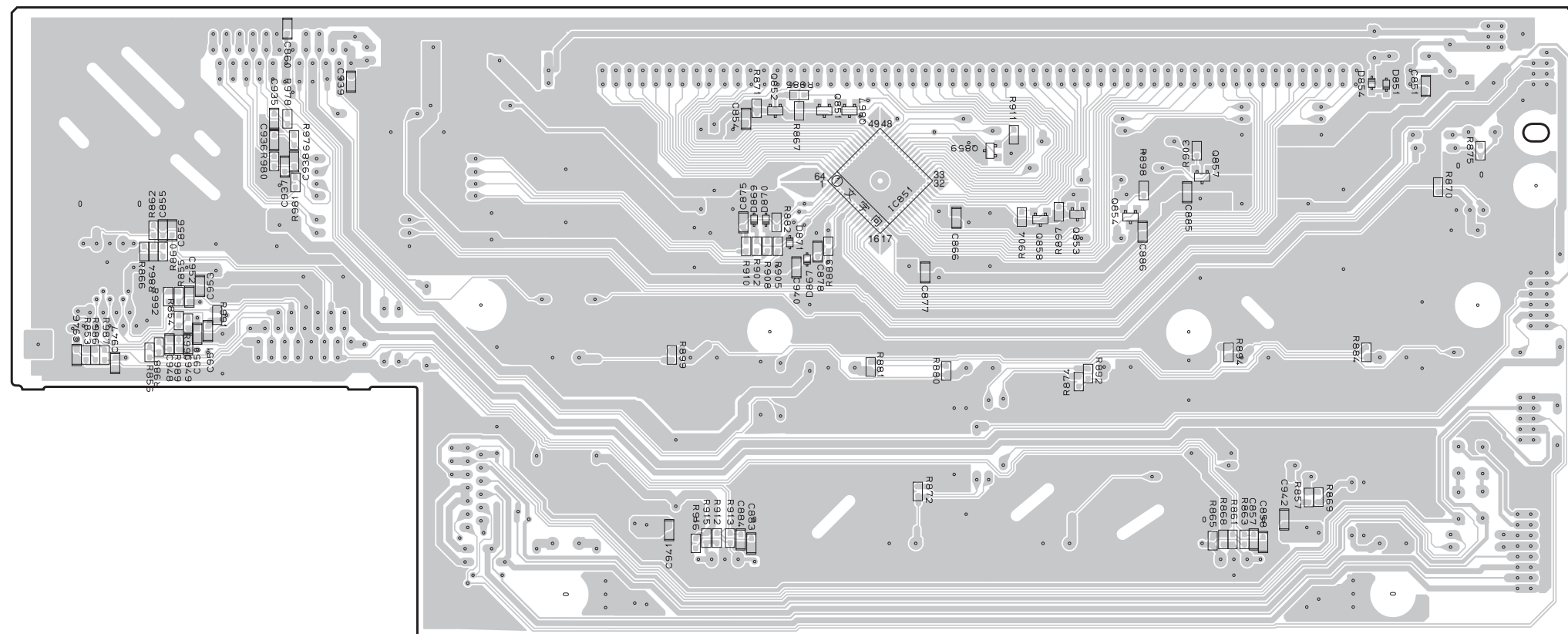


Semiconductor Location

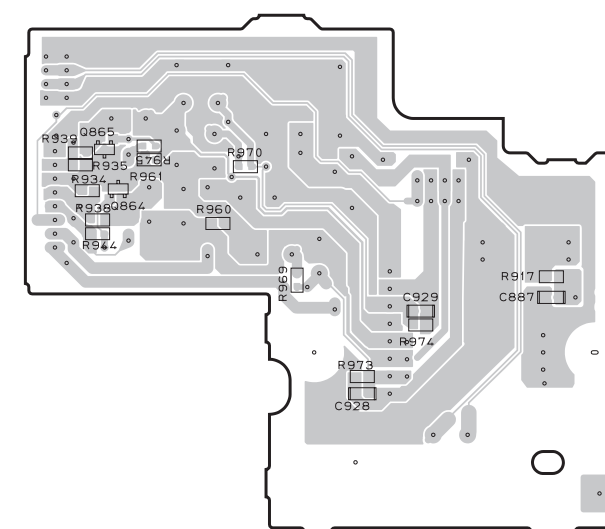
Ref. No.	Location
D853	G3
D861	G4
D862	G4
IC854	I6

1 ■ PRINTED CIRCUIT BOARD (Foil side)

OPERATION (1) P.C.B. (Side B) Lead Free Solder Used



OPERATION (2) P.C.B. (Side B)  
Lead Free Solder Used



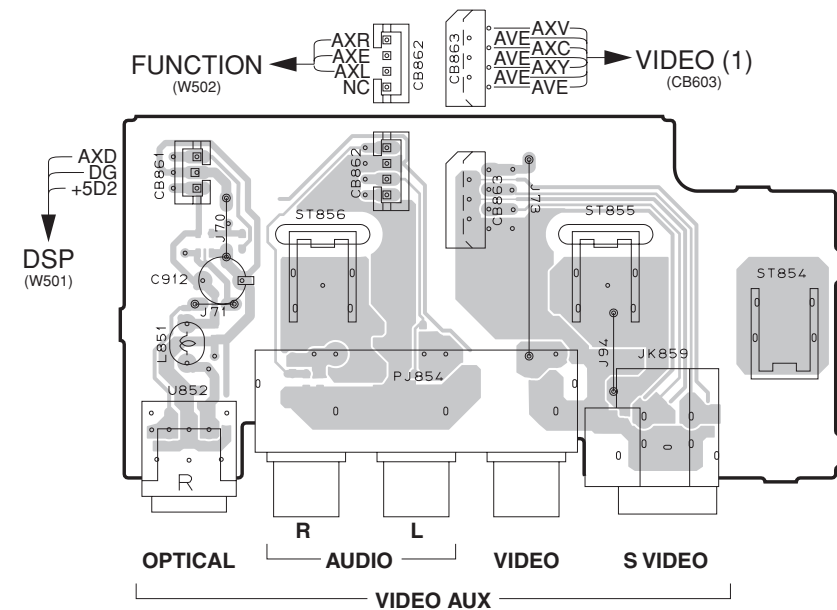
• Semiconductor Location

Ref. No.	Location	Ref. No.	Location	Ref. No.	Location	Ref. No.	Location
D851	G2	D871	D3	Q854	F3	Q865	H6
D854	G2	IC851	E3	Q857	F3	Q867	E3
D867	D3	Q851	D2	Q858	F3		
D869	D3	Q852	D2	Q859	E3		
D870	D3	Q853	F3	Q864	H6		

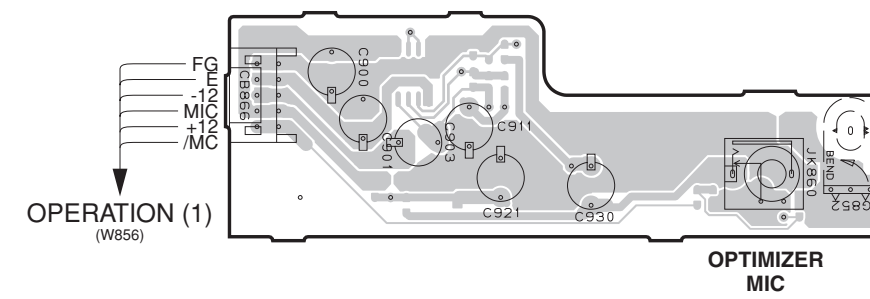


**PRINTED CIRCUIT BOARD (Foil side)**

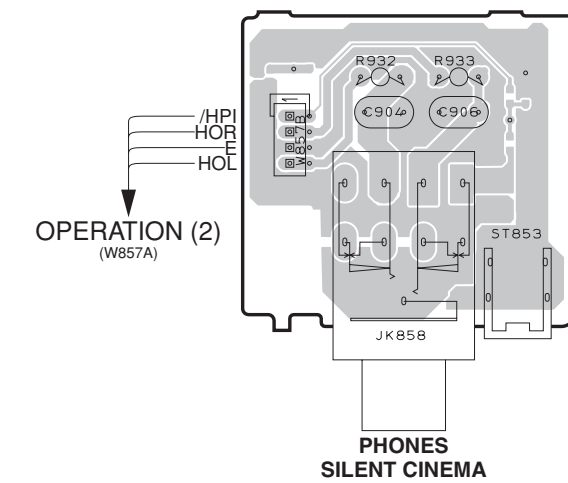
**OPERATION (3) P.C.B. (Side A)**



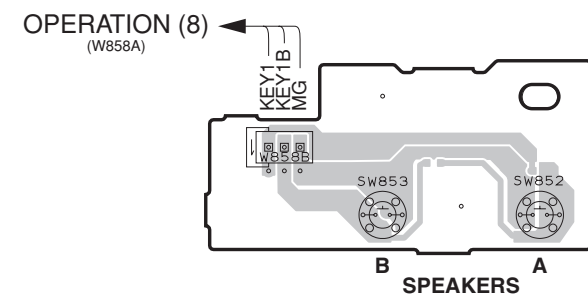
**OPERATION (4) P.C.B. (Side A)**



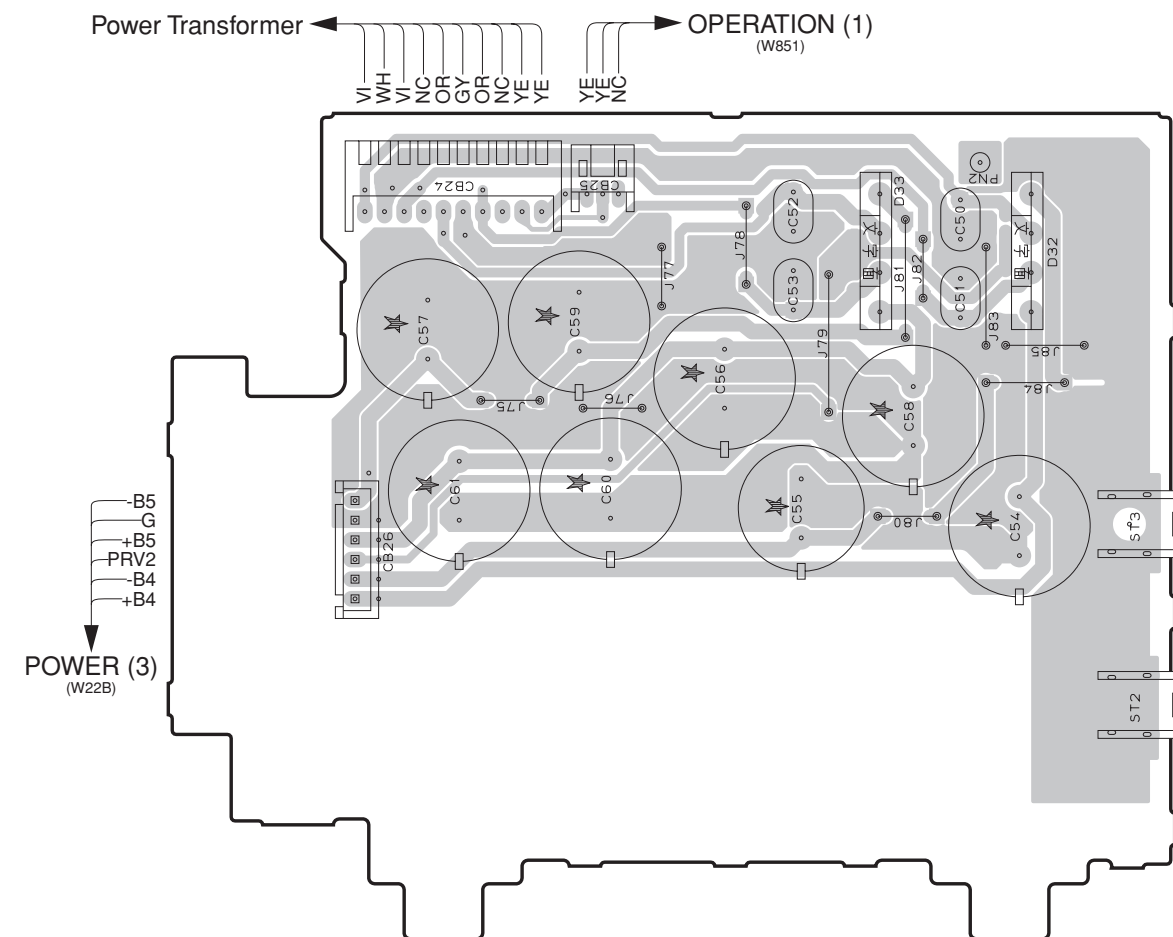
**OPERATION (5) P.C.B. (Side A)**



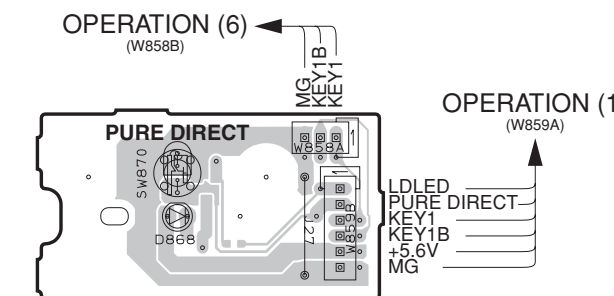
**OPERATION (6) P.C.B. (Side A)**



**OPERATION (7) P.C.B. (Side A)**



**OPERATION (8) P.C.B. (Side A)**



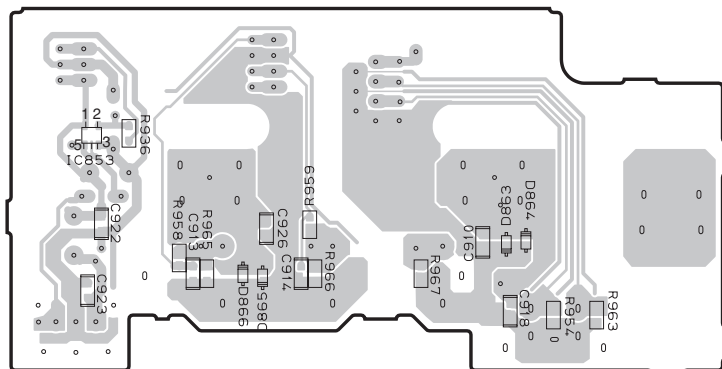
**• Semiconductor Location**

Ref. No.	Location
D32	G5
D33	F5
D868	H5

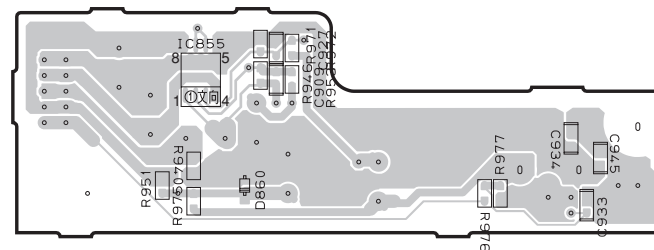
1 ■ PRINTED CIRCUIT BOARD (Foil side)

OPERATION (3) P.C.B. (Side B)

Lead Free Solder Used

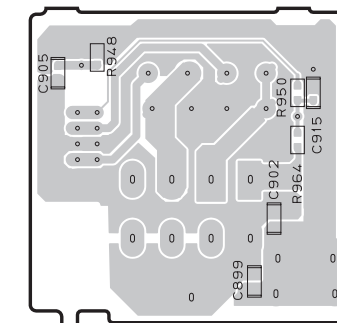


OPERATION (4) P.C.B. (Side B) Lead Free Solder Used



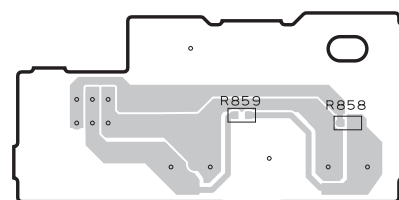
OPERATION (5) P.C.B. (Side B)

Lead Free Solder Used



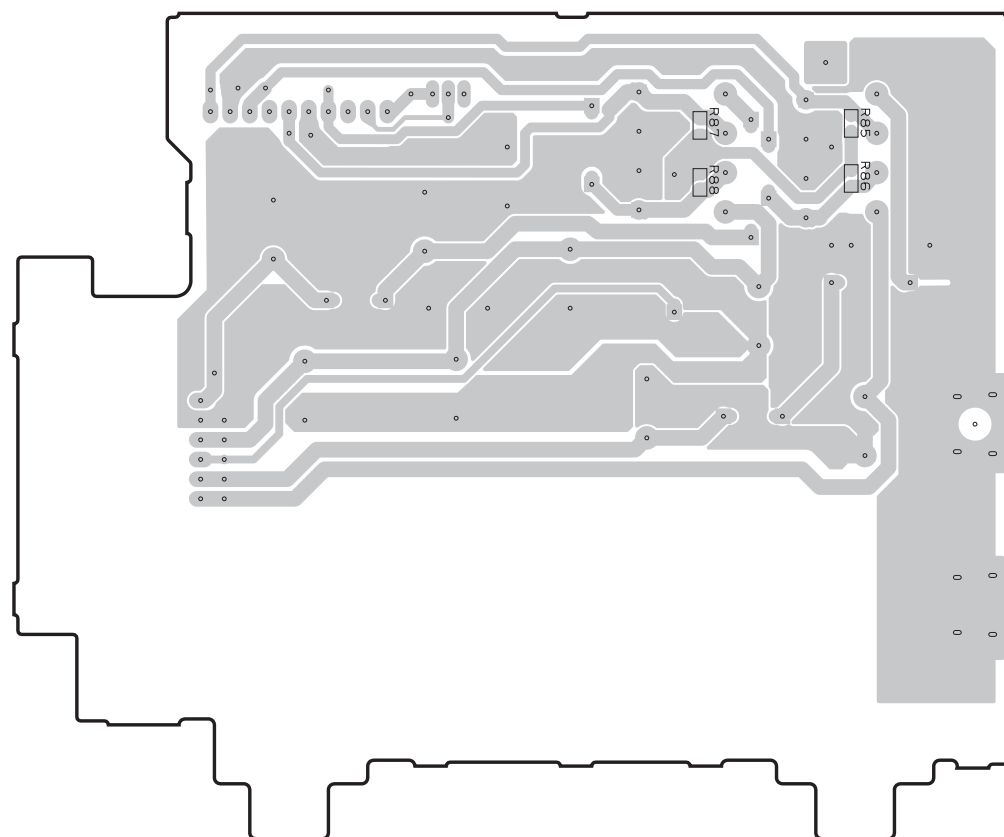
OPERATION (6) P.C.B. (Side B)

Lead Free Solder Used



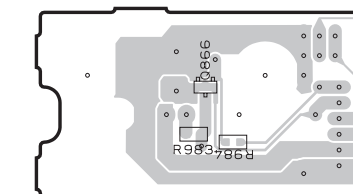
OPERATION (7) P.C.B. (Side B)

Lead Free Solder Used



OPERATION (8) P.C.B. (Side B)

Lead Free Solder Used

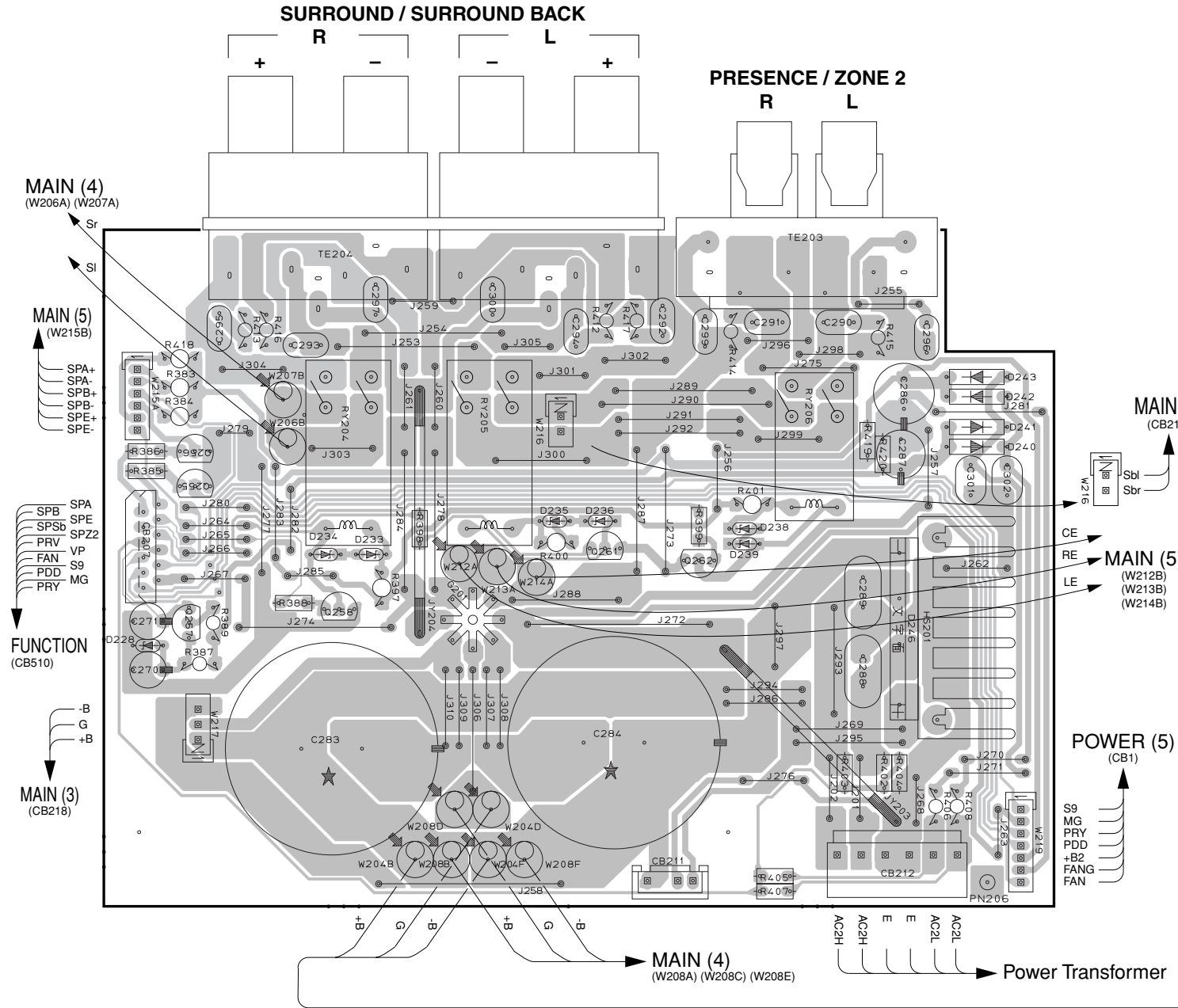


• Semiconductor Location

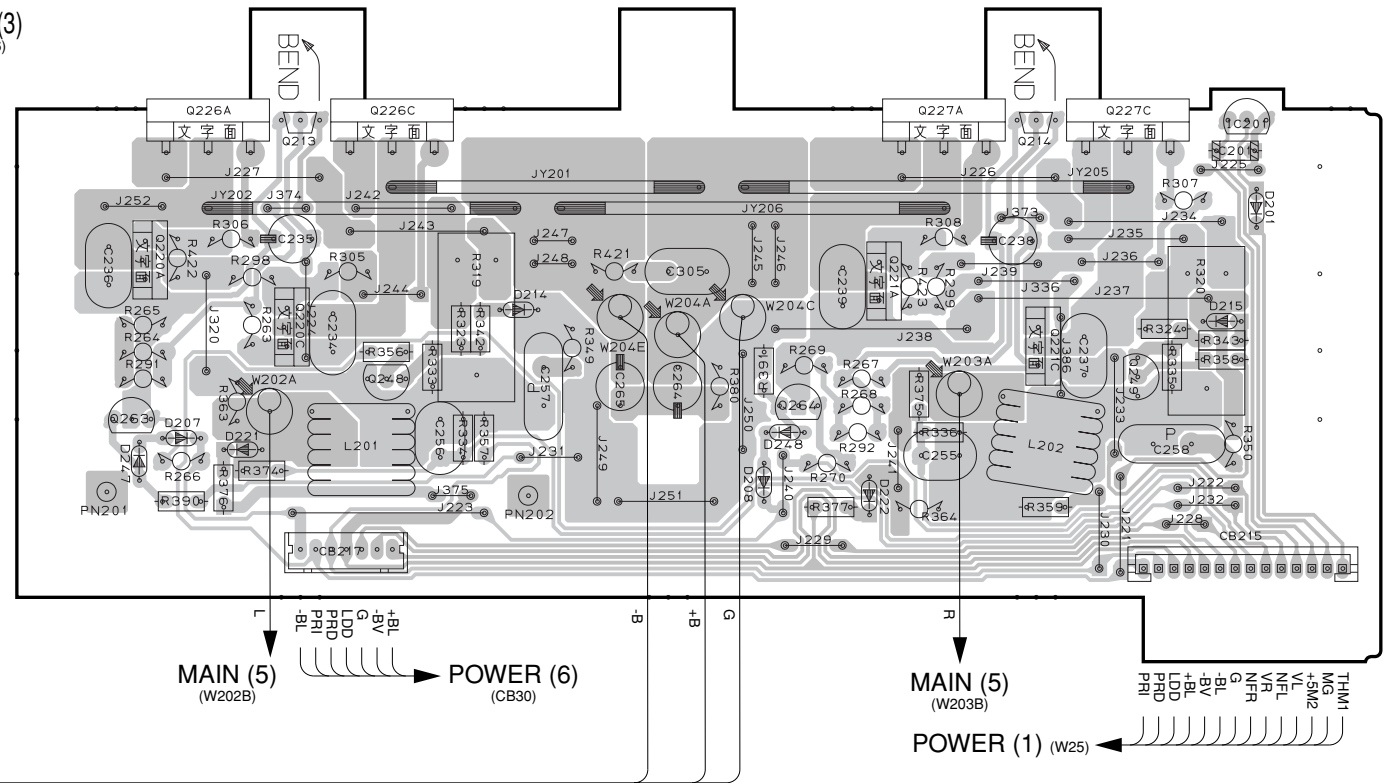
Ref. No.	Location	Ref. No.	Location
D860	F2	D866	B3
D863	C3	IC853	B2
D864	C3	IC855	F2
D865	B3	Q866	H5

■ PRINTED CIRCUIT BOARD (Foil side) Lead Free Solder Used

**MAIN (1) P.C.B. (Side A)**



**MAIN (2) P.C.B. (Side A)**



**• Semiconductor Location**

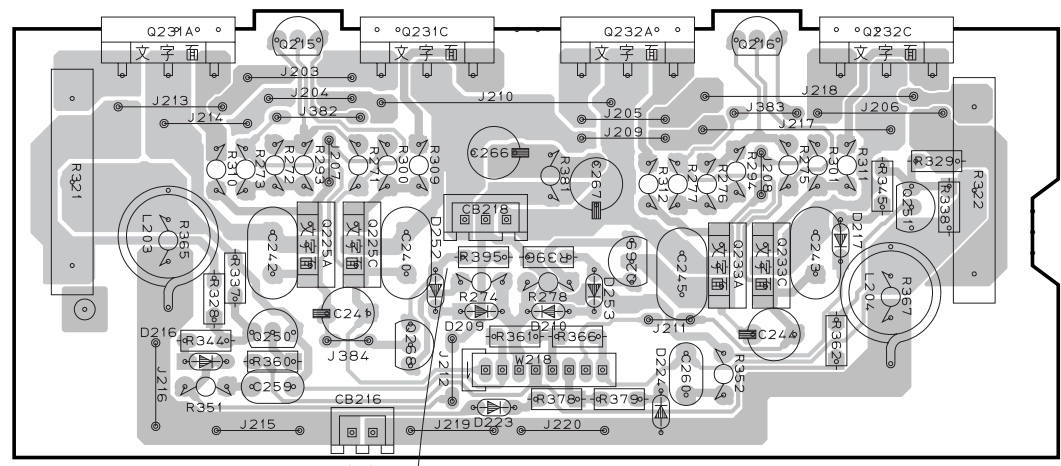
Ref. No.	Location	Ref. No.	Location	Ref. No.	Location	Ref. No.	Location	Ref. No.	Location	Ref. No.	Location	Ref. No.	Location
D201	J4	D222	I5	D238	D4	D246	E4	Q221A	I4	Q248	G5	Q262	D4
D207	G5	D228	B4	D239	D4	IC201	J4	Q221C	I4	Q255	B4		
D208	I5	D233	C4	D240	E4	Q213	G4	Q226A	G4	Q256	B4		
D214	H4	D234	B4	D241	E3	Q214	I4	Q226C	G4	Q257	B4		
D215	J4	D235	C4	D242	E3	Q220A	F4	Q227A	I4	Q258	B4		
D221	G5	D236	C4	D243	E3	Q220C	G4	Q227C	J4	Q261	C4		

1 ■ PRINTED CIRCUIT BOARD (Foil side) Lead Free Solder Used

• Semiconductor Location

Ref. No.	Location
D206	A5
D209	B3
D210	C3
D211	D6
D212	B6
D213	A6
D216	B3
D217	D3
D218	E6
D219	D6
D220	B6
D223	B3
D225	F4
D226	G4
D227	F4
D229	F4
D231	H4
D232	G4
IC202	A5
Q215	B2
Q216	C2
Q217	E5
Q218	C5
Q219	B5
Q222A	E6
Q222C	E6
Q223A	B6
Q223C	C6
Q224A	A6
Q224C	B6
Q225A	B3
Q225C	B3
Q228A	D5
Q228C	E5
Q229A	C5
Q229C	D5
Q230A	B5
Q230C	B5
Q231A	A2
Q231C	B2
Q232A	C2
Q232C	D2
Q233A	C3
Q233C	C3
Q250	B3
Q251	D2
Q252	E6
Q253	D6
Q254	B6

MAIN (3) P.C.B. (Side A)

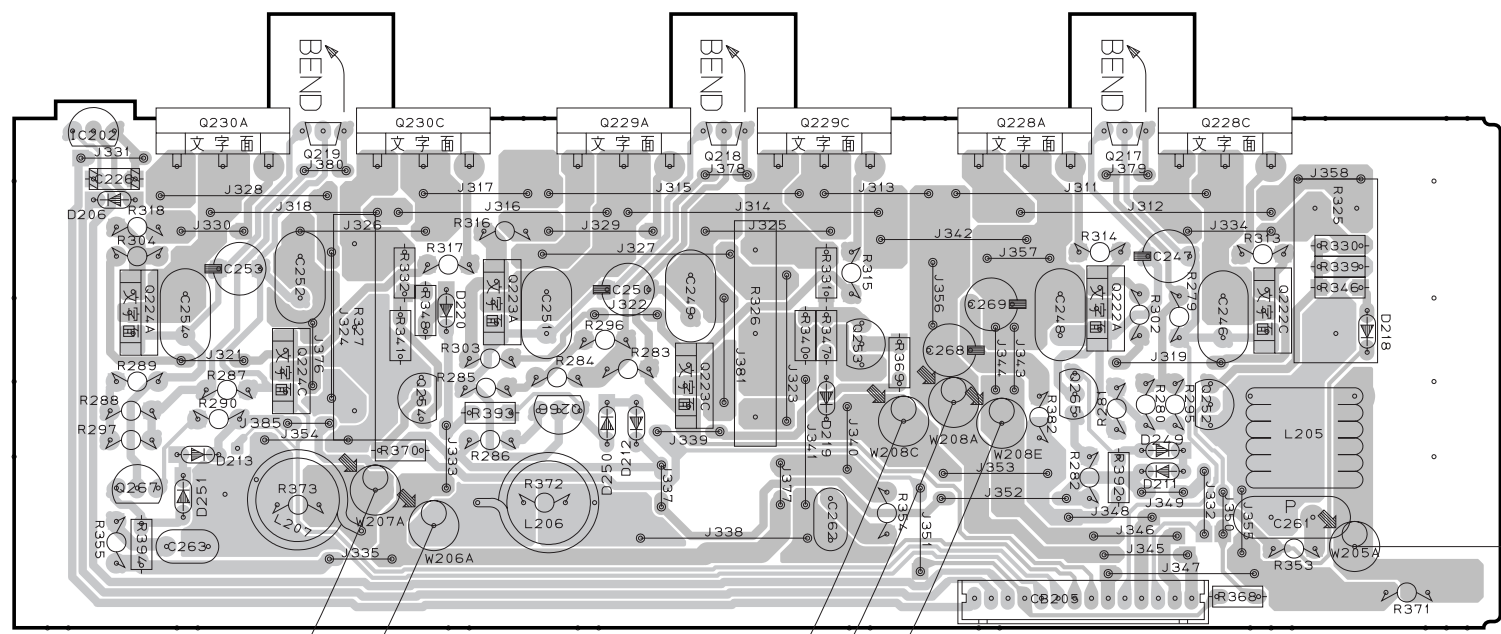


MAIN (1) (W216)

POWER (6) (CB29)

MAIN (1) (W217)

MAIN (4) P.C.B. (Side A)

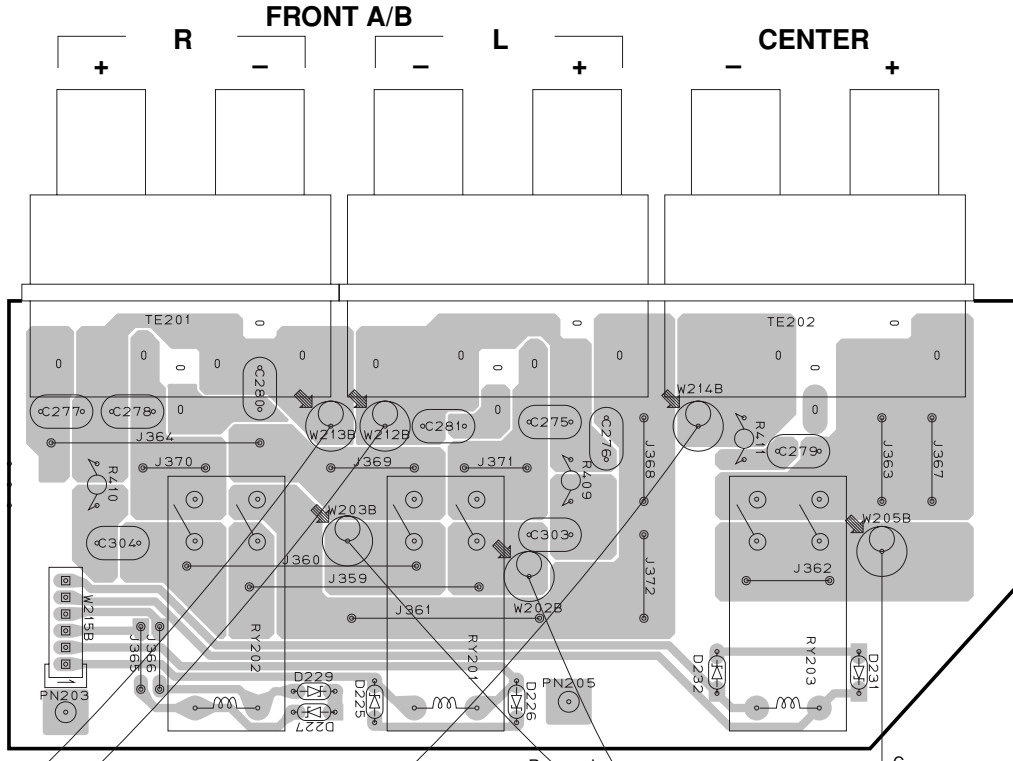


MAIN (1) (W206B) (W207B)

MAIN (1) (W208B) (W208C) (W208F)

POWER (1) (CB23)

MAIN (5) P.C.B. (Side A)



MAIN (1) (W212A) (W213A)

MAIN (1) (W214A)

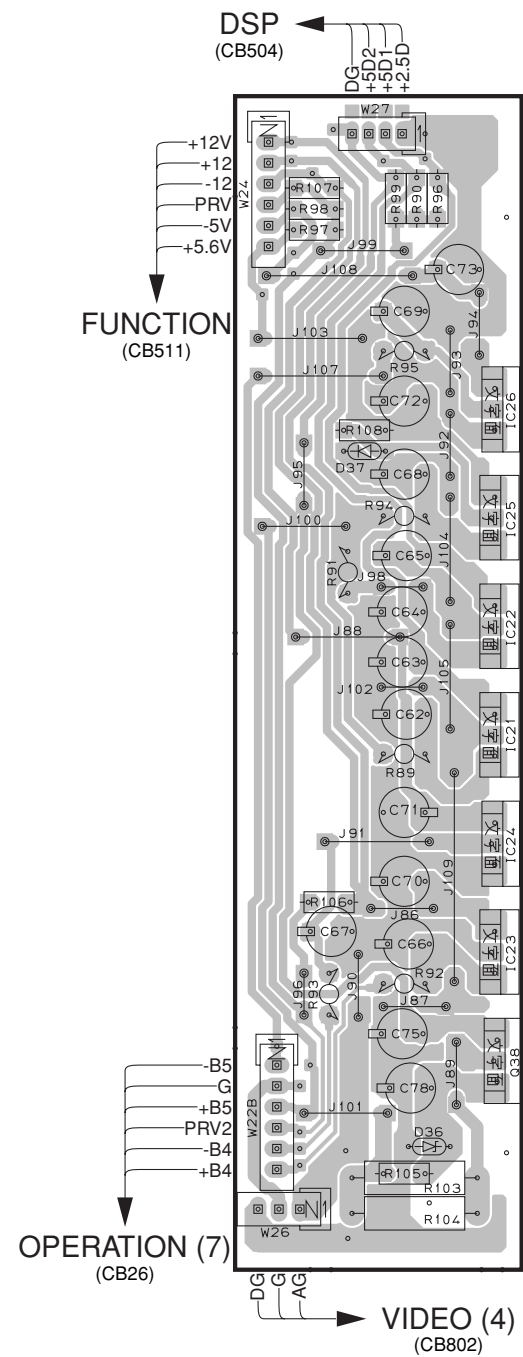
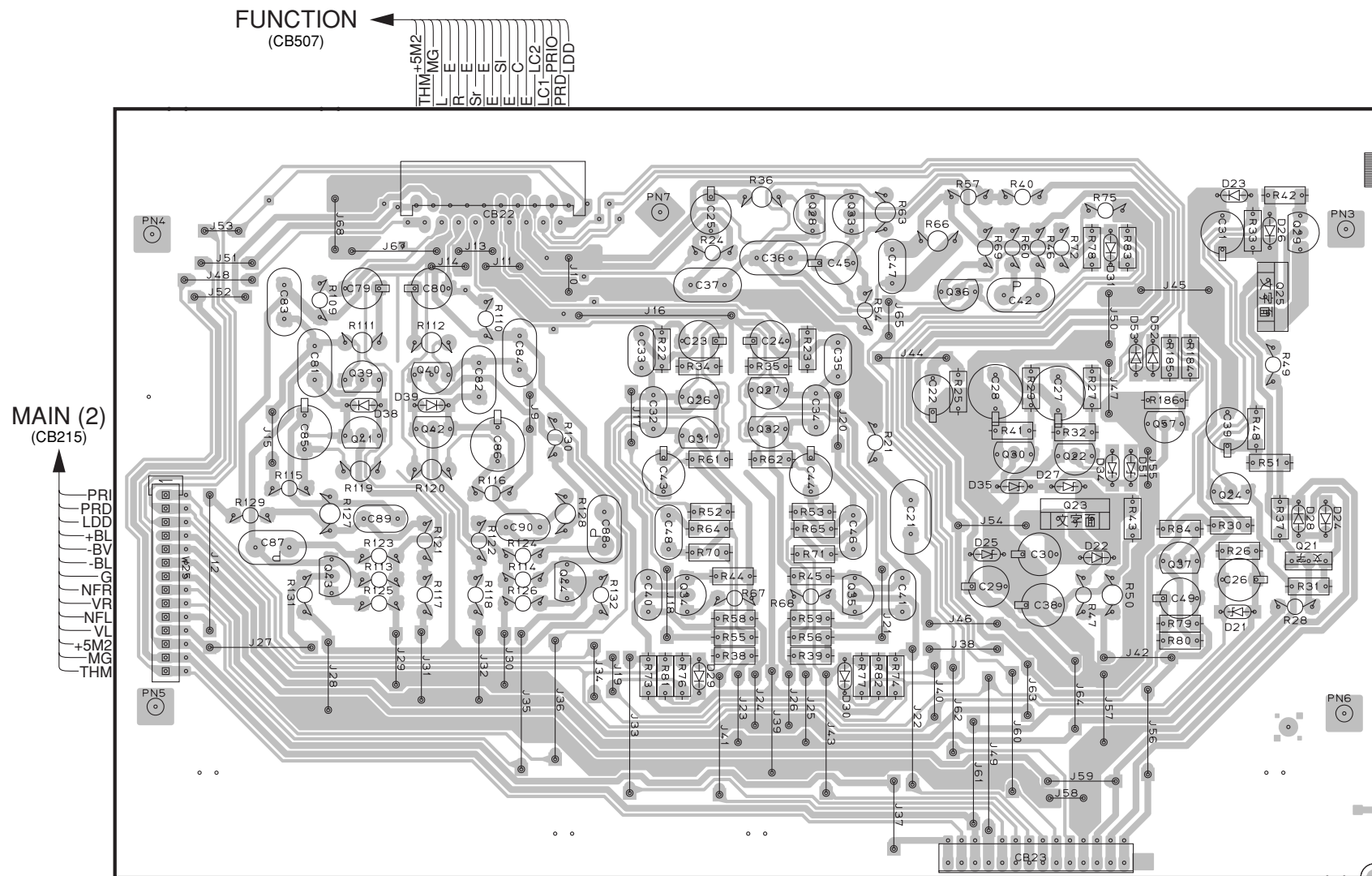
MAIN (2) (W202A) (W203A)

1  
2  
3  
4  
5  
6  
7

PRINTED CIRCUIT BOARD (Foil side) Lead Free Solder Used

POWER (1) P.C.B. (Side A)

POWER (3) P.C.B. (Side A)



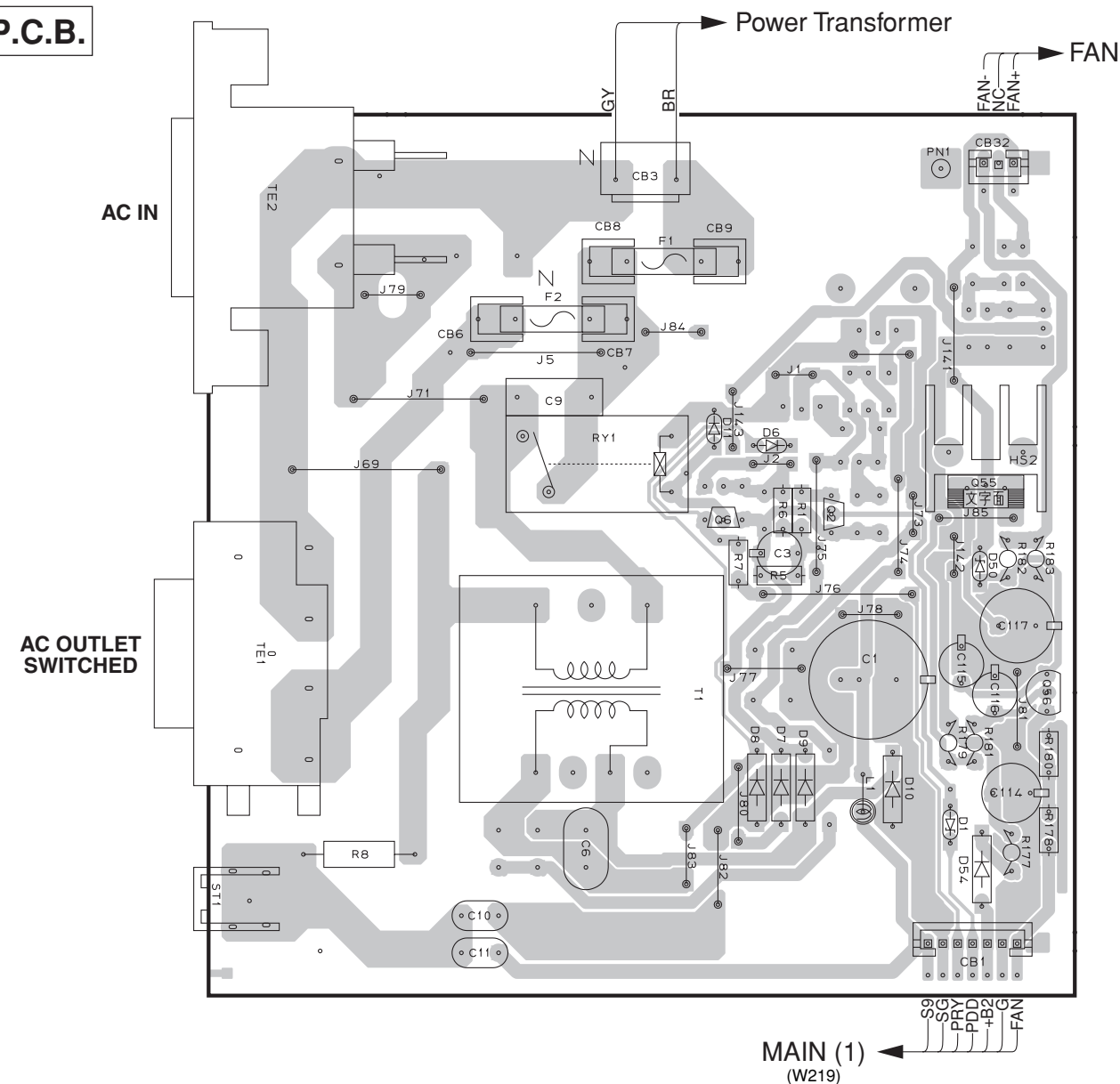
Semiconductor Location

Ref. no.	Location	Ref. no.	Location	Ref. no.	Location	Ref. no.	Location
D0021	F5	D0036	I6	Q0021	F4	Q0034	D4
D0022	E4	D0037	I3	Q0022	E4	Q0035	D4
D0023	F3	D0038	B4	Q0023	E4	Q0036	E3
D0024	F4	D0039	C4	Q0024	F4	Q0037	F4
D0025	E4	D0051	F4	Q0025	F3	Q0038	I5
D0026	F3	D0052	F3	Q0026	D4	Q0039	B4
D0027	E4	D0053	F3	Q0027	D4	Q0040	C4
D0028	F4	IC021	I4	Q0028	D3	Q0041	B4
D0029	D5	IC022	I4	Q0029	F3	Q0042	C4
D0030	D5	IC023	I5	Q0030	E4	Q0043	B4
D0031	E3	IC024	I5	Q0031	D4	Q0044	C4
D0034	E4	IC025	I4	Q0032	D4	Q0057	F4
D0035	E4	IC026	I3	Q0033	D3		

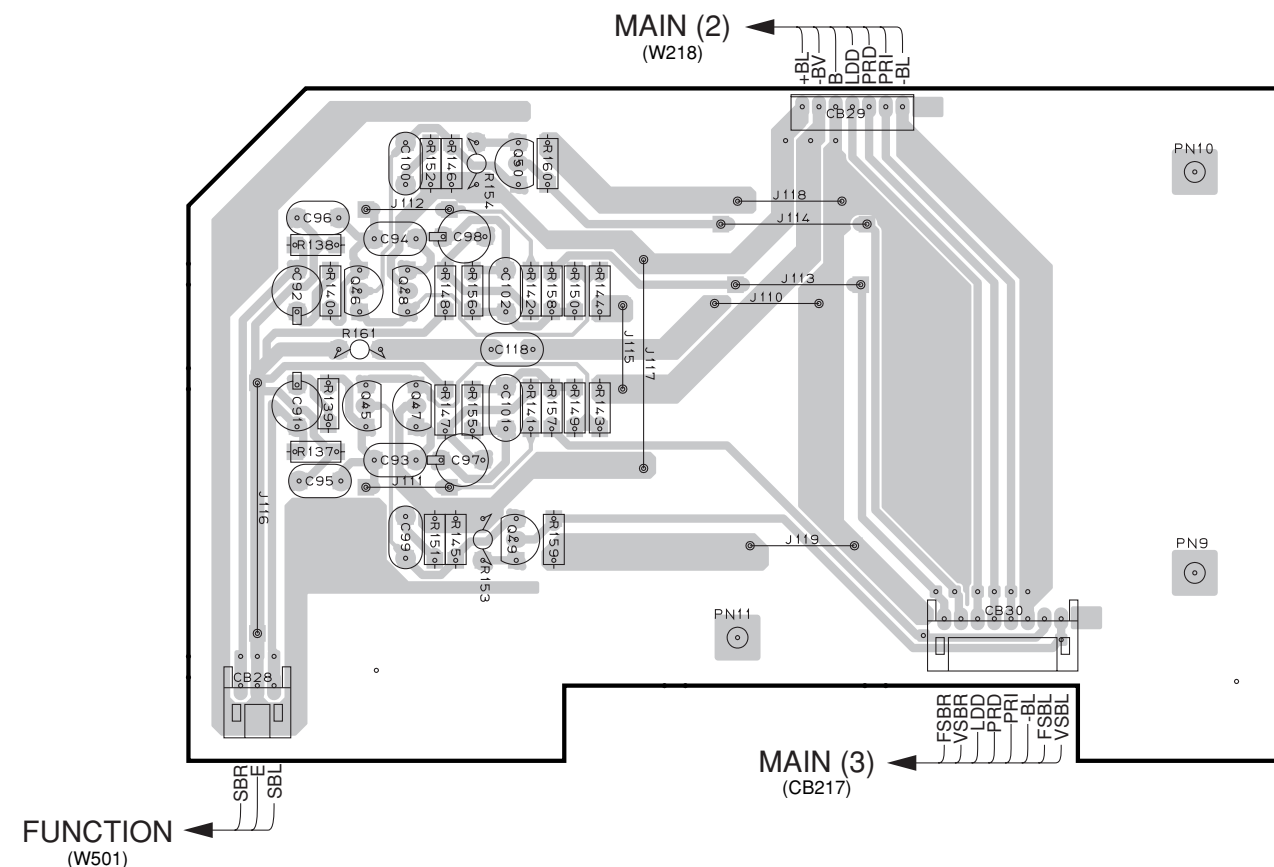
PRINTED CIRCUIT BOARD (Foil side) Lead Free Solder Used

**POWER (5) P.C.B.**

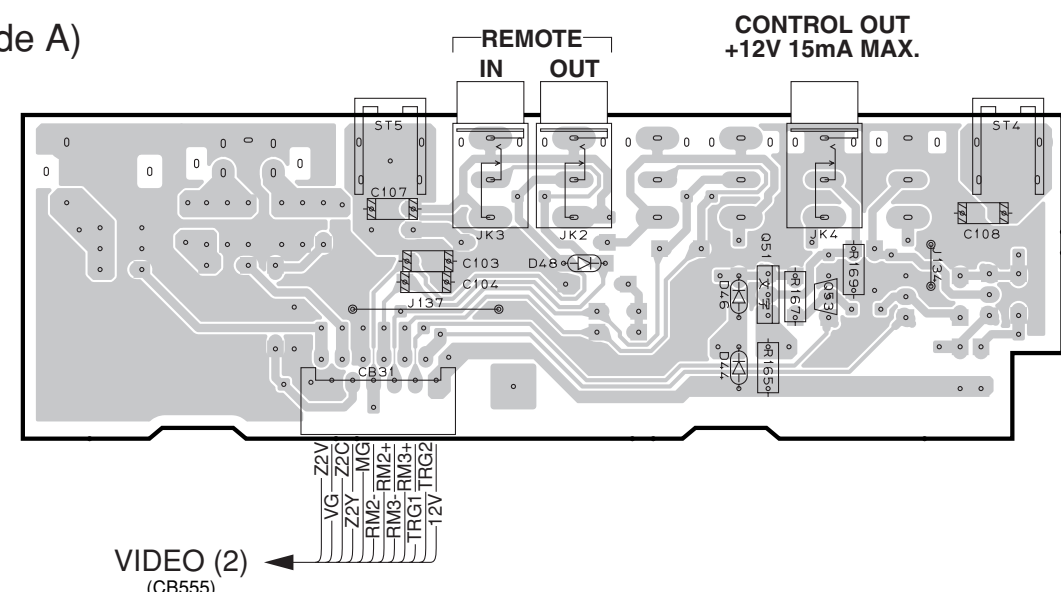
(Side A)



**POWER (6) P.C.B.** (Side A)



**POWER (7) P.C.B.** (Side A)



Circuit No.	U, C	A
CB6, 7	O	X
F2	O	X
J5	X	O
R8	O	X

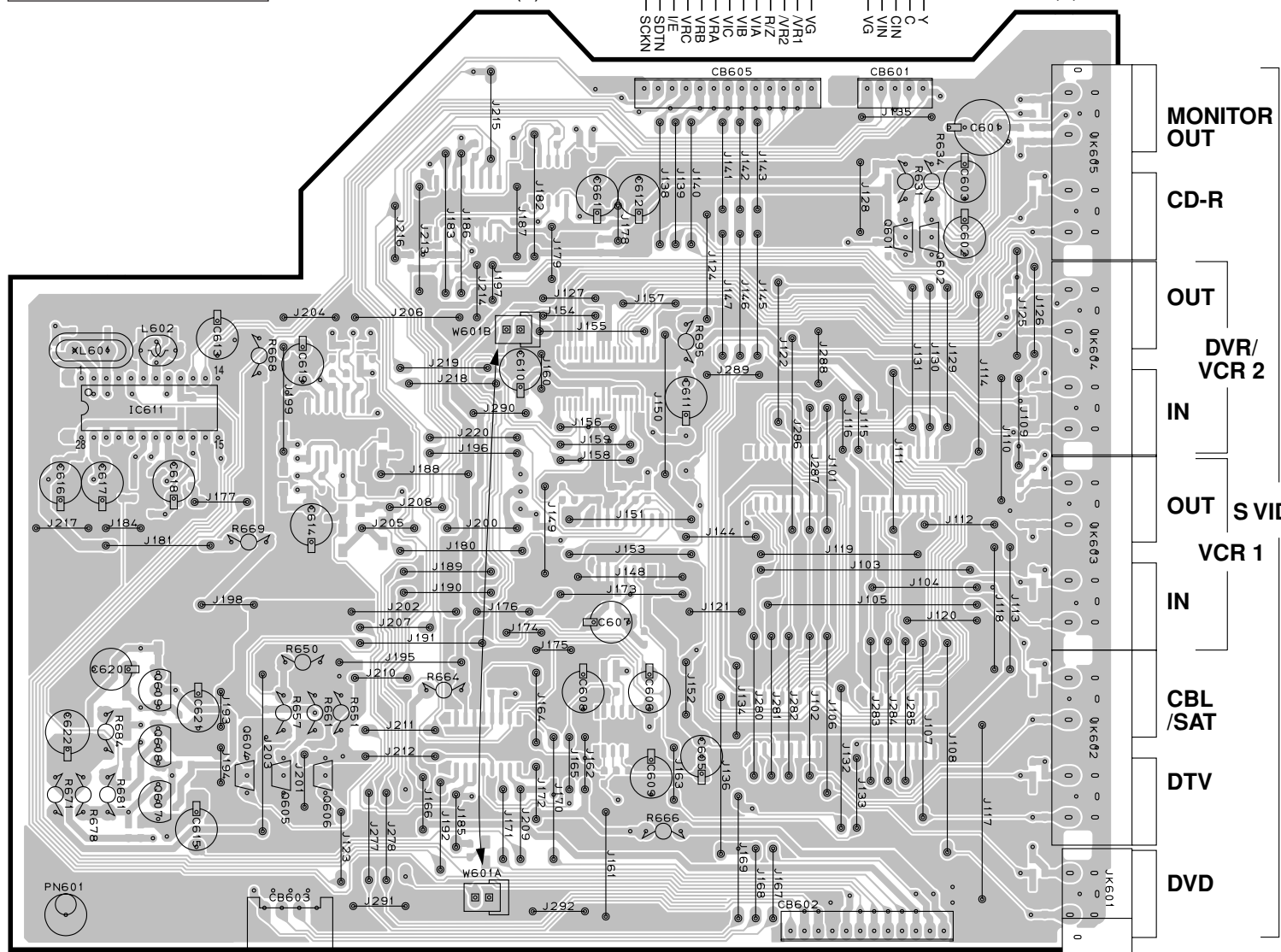
X: NOT USED  
O: USED / APPLICABLE

• Semiconductor Location

Ref. no.	Location	Ref. no.	Location
D0001	E4	Q0002	E3
D0006	D3	Q0006	D3
D0007	D4	Q0045	G3
D0008	D4	Q0046	G3
D0009	D4	Q0047	G3
D0010	E4	Q0048	G3
D0011	D3	Q0049	H3
D0044	E7	Q0050	H2
D0046	E6	Q0051	E6
D0048	E6	Q0053	F6
D0050	E3	Q0055	E3
D0054	E4	Q0056	E4

PRINTED CIRCUIT BOARD (Foil side)

VIDEO (1) P.C.B. (Side A)



OPERATION (3)  
(CB863)

AVE  
AXV  
-5V  
AVE  
AXC  
AVE  
AXV

VIDEO (2)  
(CB553)

+5.6V  
AXV  
-5V  
VSEL  
MON  
Y/OSER  
OES  
VSY  
VG  
Z1Y  
Z1C  
SVIDD

VIDEO (7) (CB751)

VG  
VH1  
R/Z  
V/A  
V/B  
V/C  
V/FB  
V/E  
SDTN  
SOKN

VIDEO (8) (CB761)

VG  
CIN  
VIN  
V/D

MONITOR  
OUT

CD-R

OUT

DVR/  
VCR 2

IN

OUT S VIDEO

VCR 1

IN

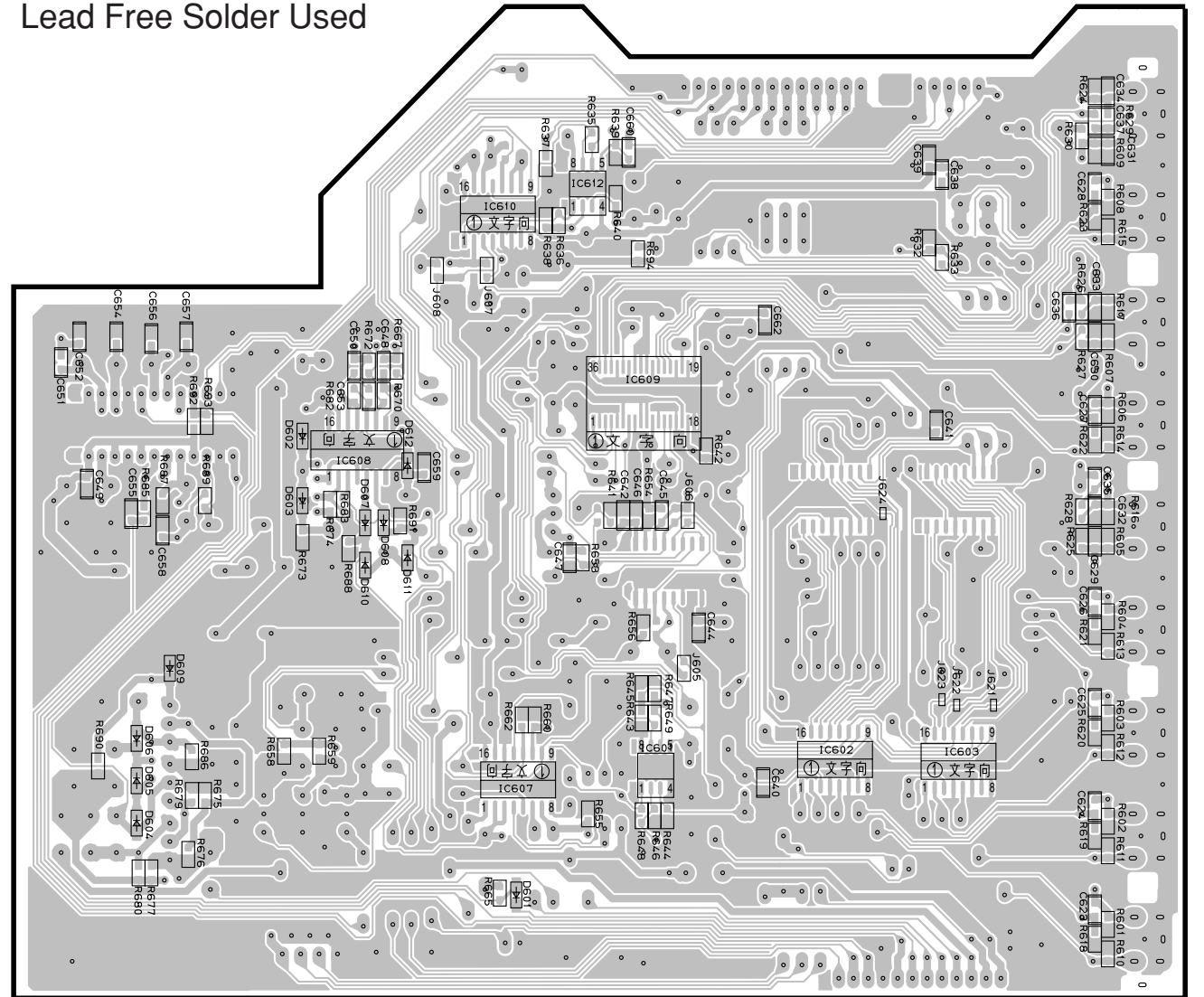
CBL  
/SAT

DTV

DVD

VIDEO (1) P.C.B. (Side B)

Lead Free Solder Used



• Semiconductor Location

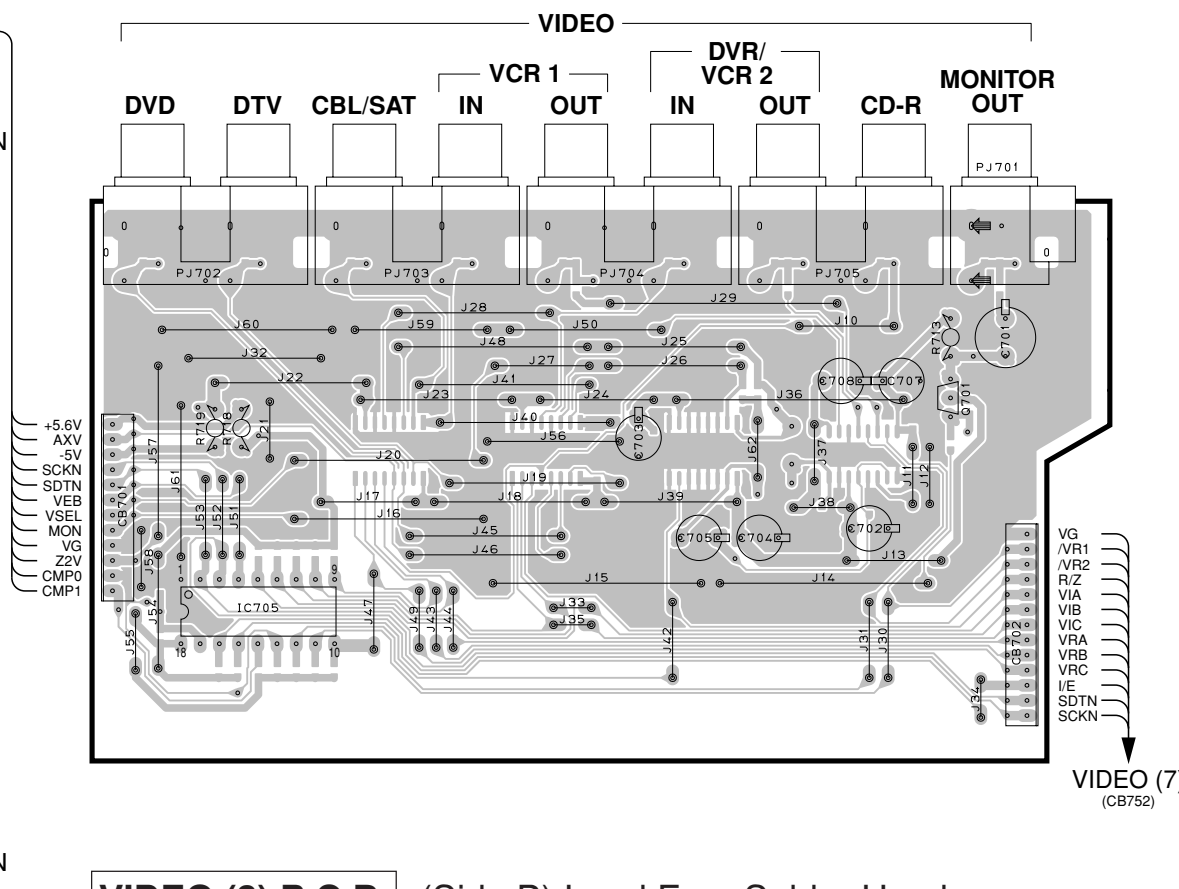
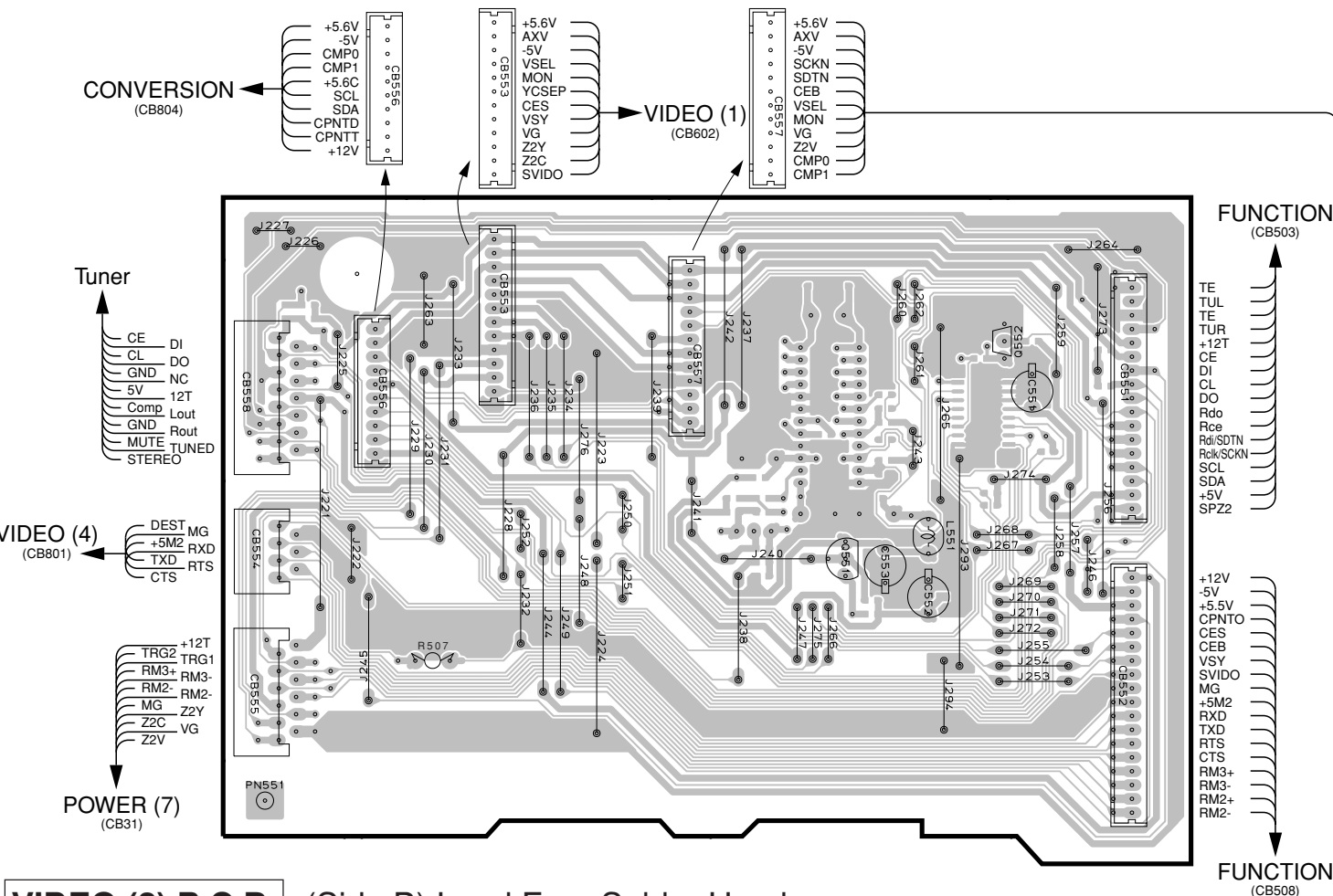
Ref. No.	Location	Ref. No.	Location	Ref. No.	Location	Ref. No.	Location	Ref. No.	Location
D601	H5	D607	G3	IC601	I4	IC610	H2	Q605	B4
D602	G3	D608	H3	IC602	I4	IC611	B3	Q606	B4
D603	G3	D609	G4	IC603	J4	IC612	H2	Q607	B5
D604	G5	D610	G4	IC607	H4	Q601	D2	Q608	B4
D605	G4	D611	H4	IC608	G3	Q602	E2	Q609	B4
D606	G4	D612	H3	IC609	H3	Q604	B4		

PRINTED CIRCUIT BOARD (Foil side)

• Semiconductor Location

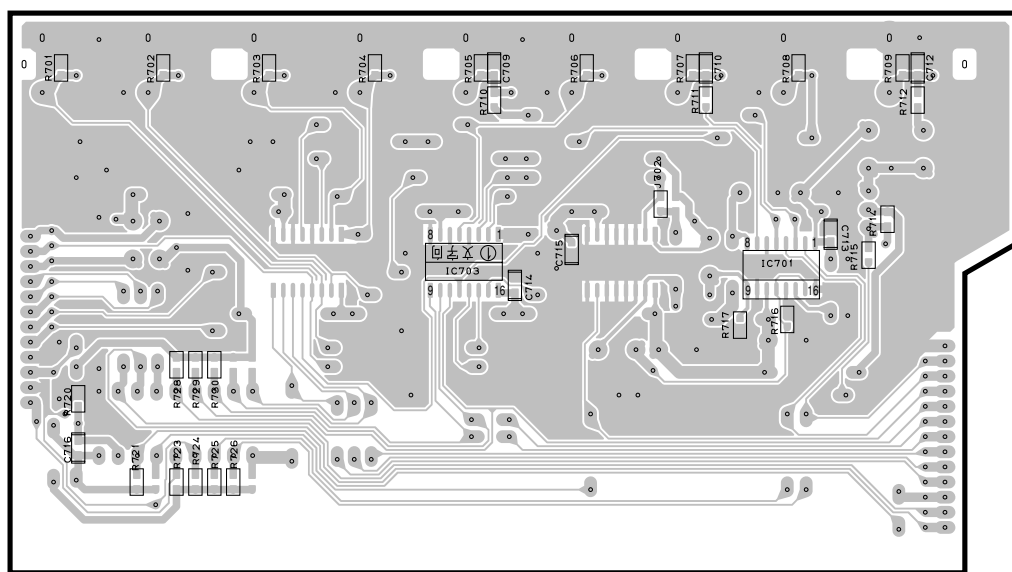
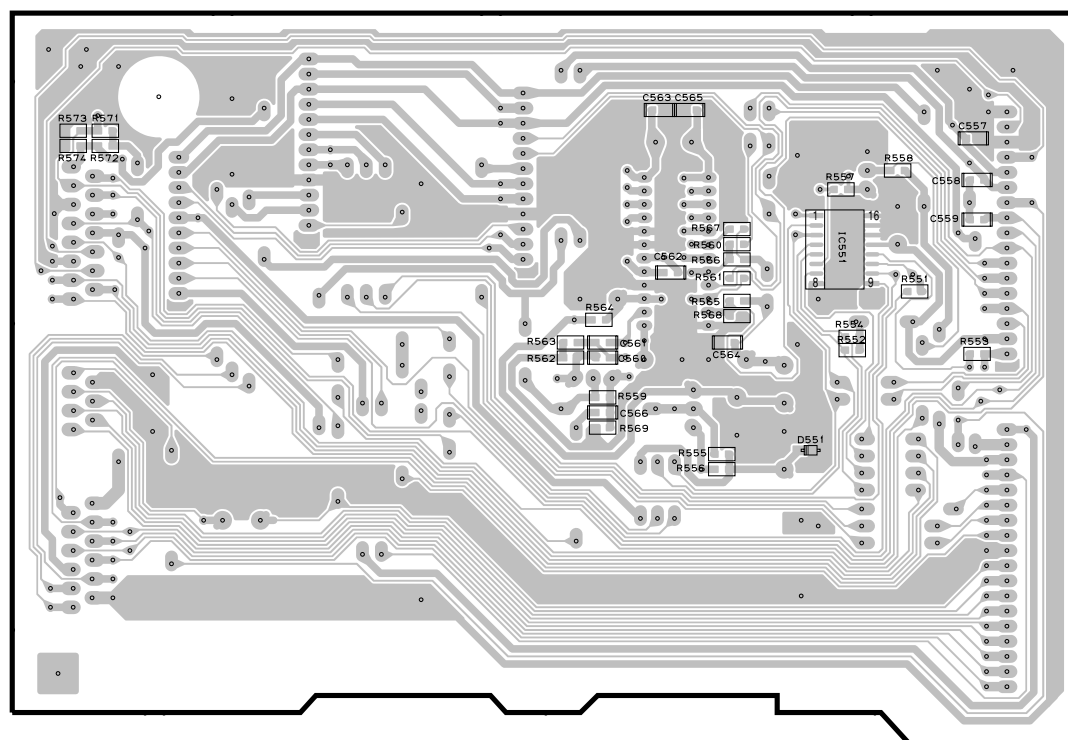
VIDEO (2) P.C.B. (Side A)

VIDEO (3) P.C.B. (Side A)



VIDEO (2) P.C.B. (Side B) Lead Free Solder Used

VIDEO (3) P.C.B. (Side B) Lead Free Solder Used



Ref. No.	Location
D551	D6
IC551	D6
IC701	I6
IC703	H6
IC705	G4
Q551	D3
Q552	E3
Q553	D3
Q701	I3

Circuit No.	U	C	A
IC552	X	X	X

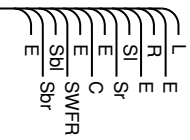
X: NOT USED  
O: USED / APPLICABLE



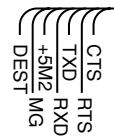
PRINTED CIRCUIT BOARD (Foil side)

VIDEO (4) P.C.B. (Side A)

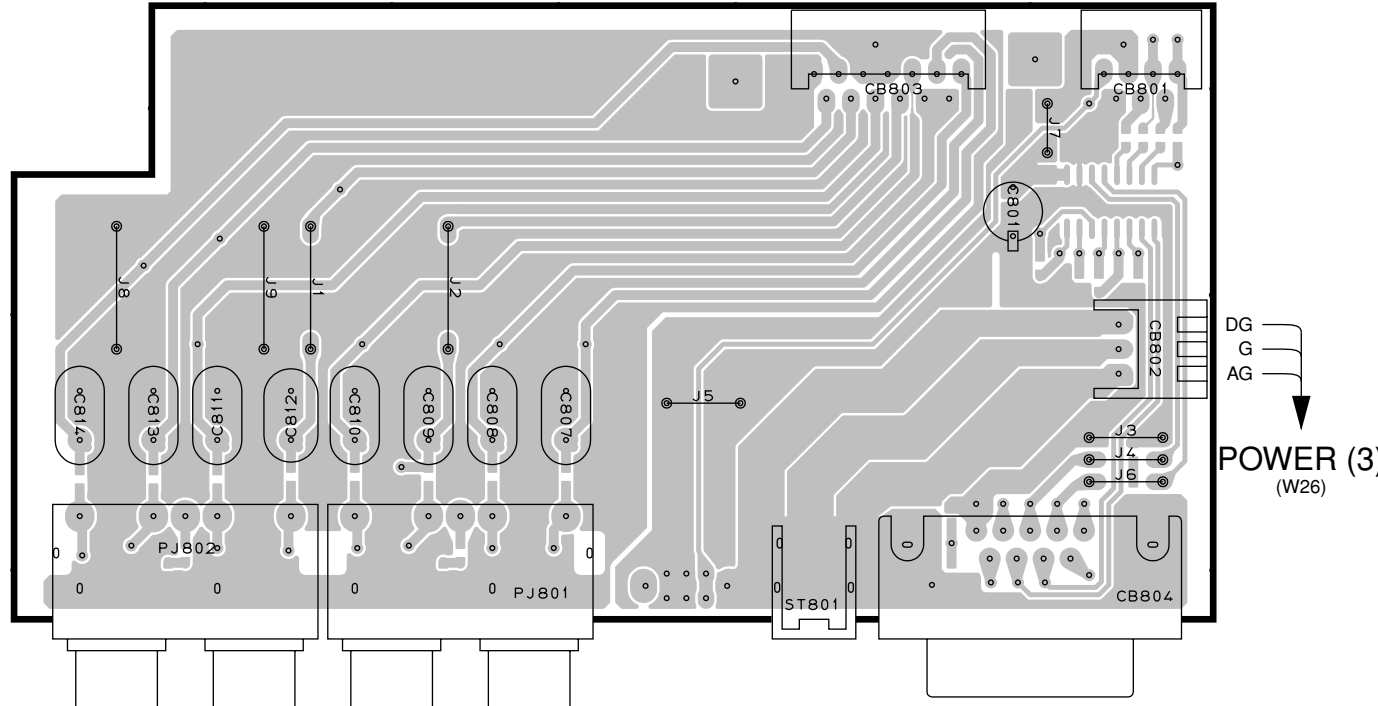
FUNCTION (CB513)



VIDEO (2) (CB554)



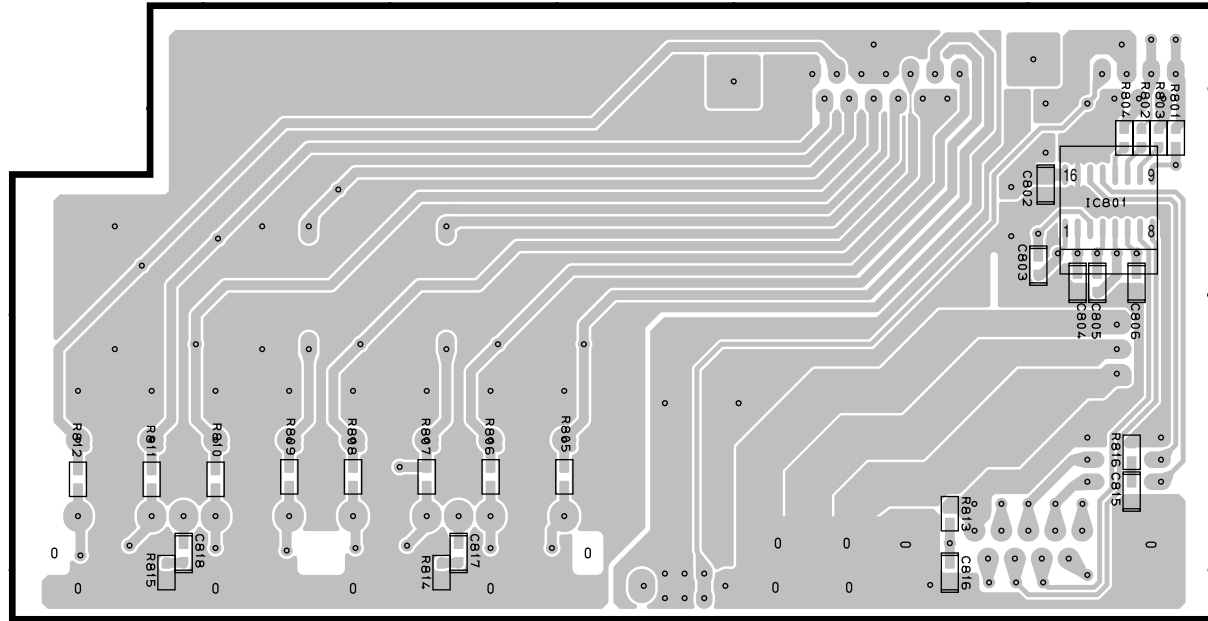
POWER (3) (W26)  
DG  
G  
AG



SURROUND BACK/PRESENCE  
SUB WOOFER /CENTER  
SURROUND FRONT  
PRE OUT

RS-232C

VIDEO (4) P.C.B. (Side B) Lead Free Solder Used

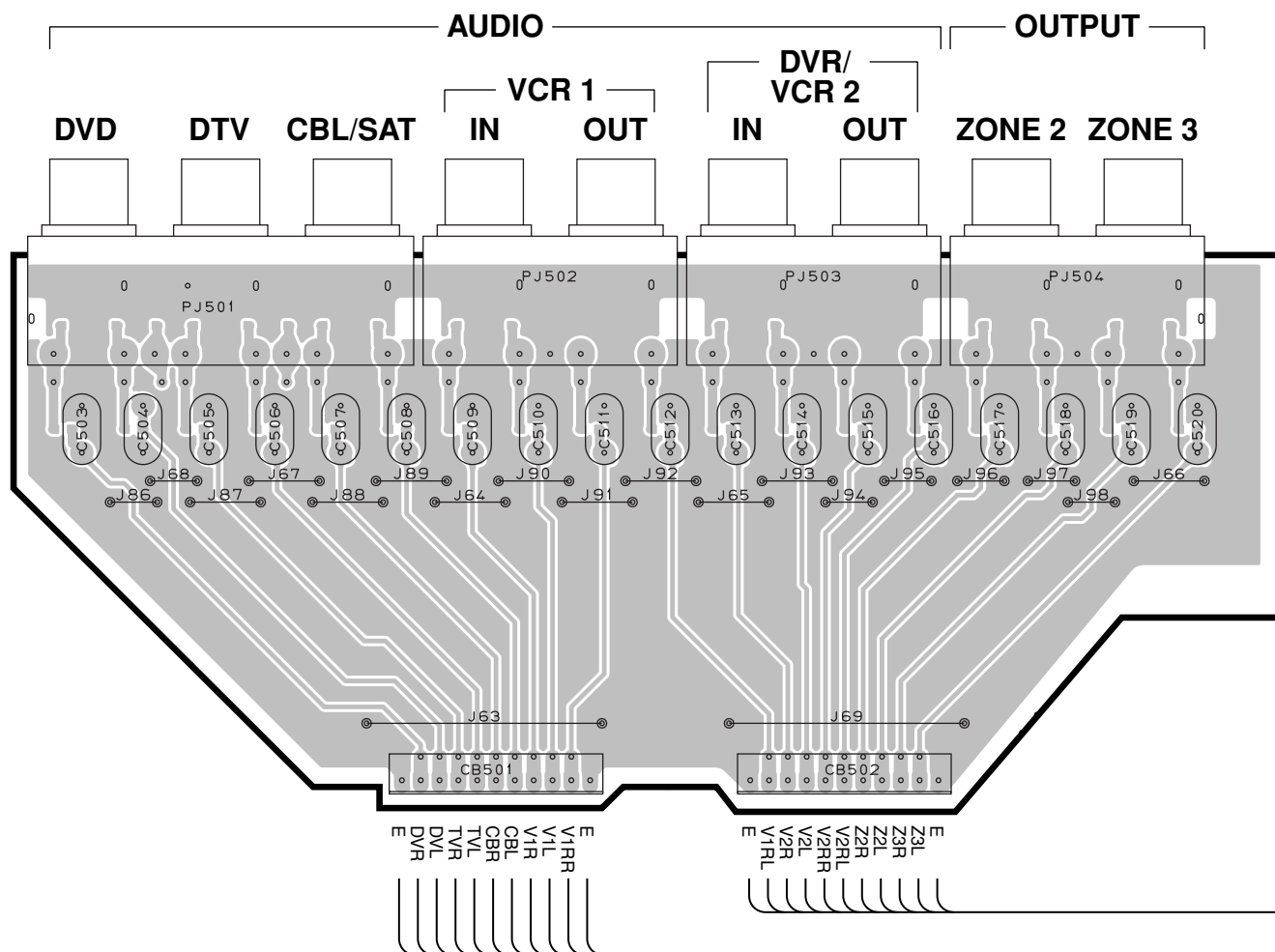


• Semiconductor Location

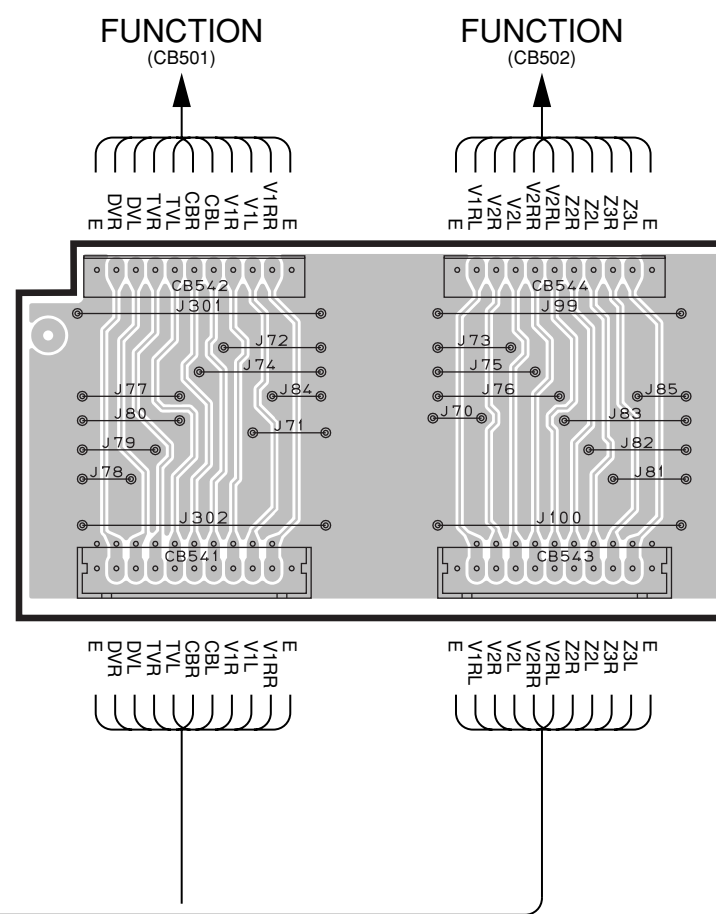
Ref. No.	Location
IC801	I2

1 ■ PRINTED CIRCUIT BOARD (Foil side)

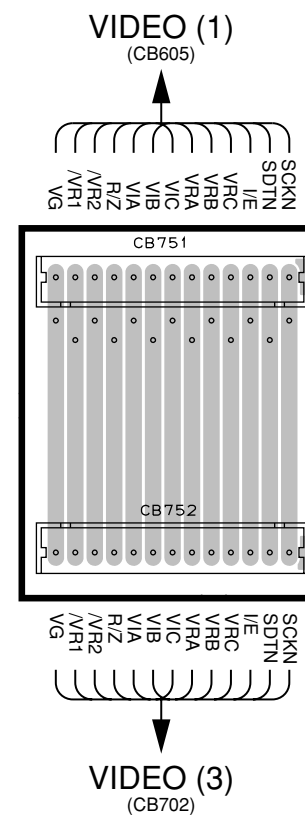
VIDEO (5) P.C.B. (Side A)



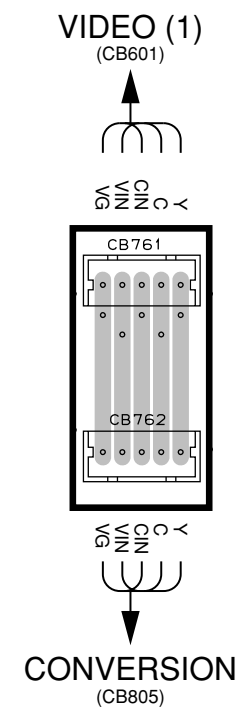
VIDEO (6) P.C.B. (Side A)



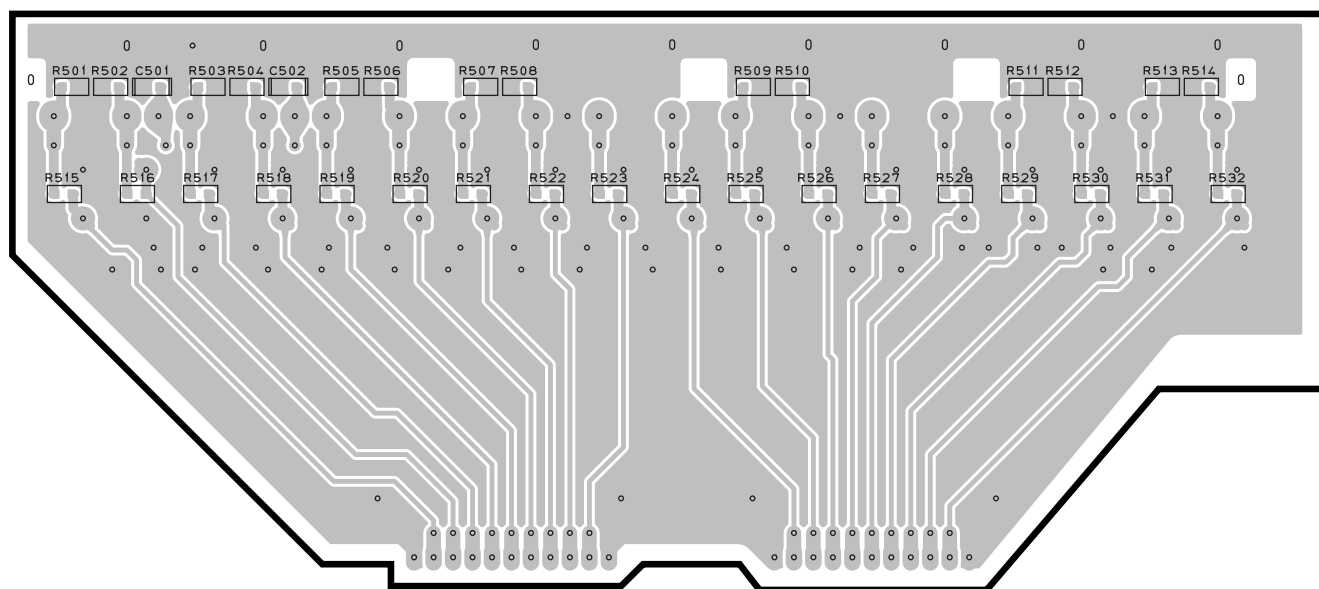
VIDEO (7) P.C.B. (Side A)



VIDEO (8) P.C.B. (Side A)



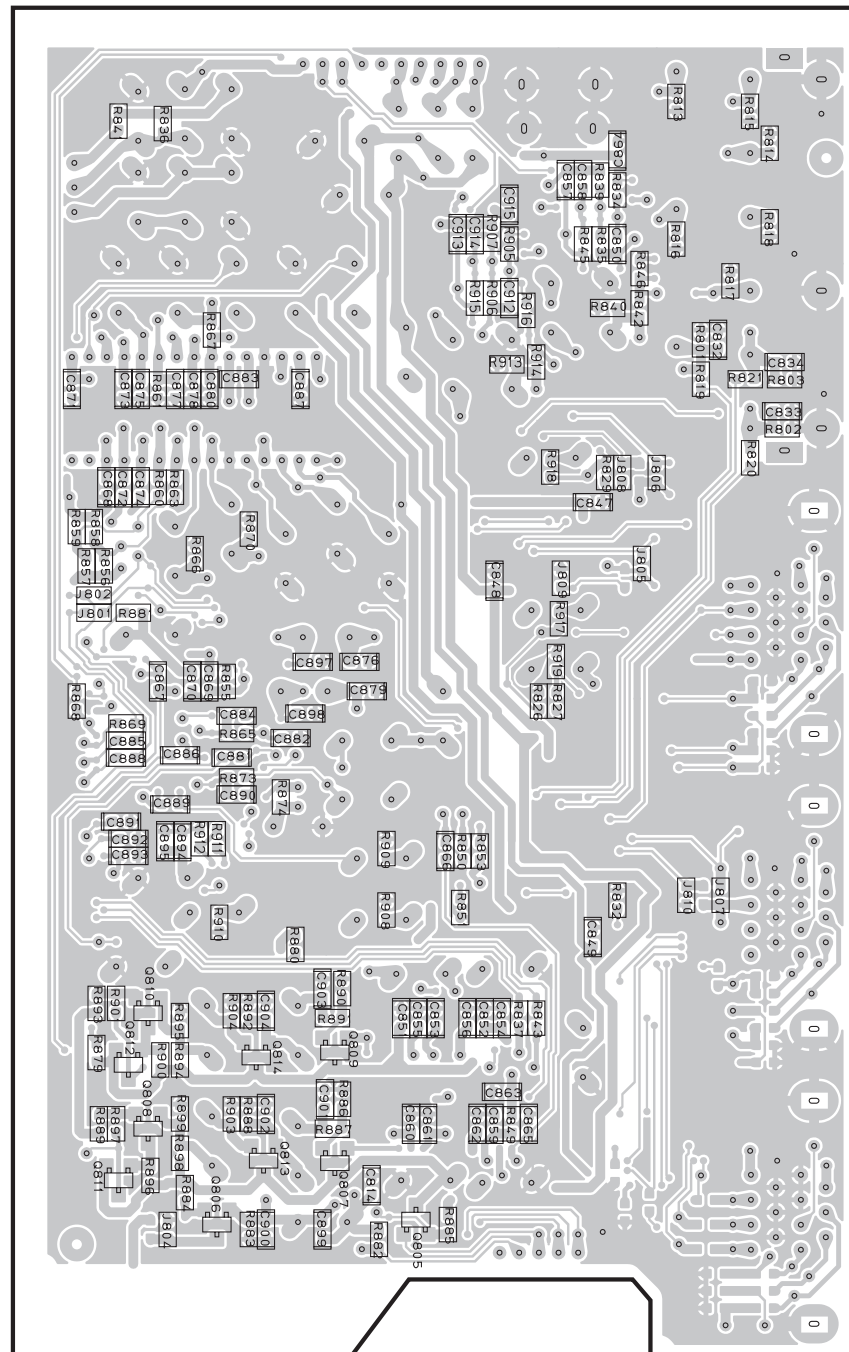
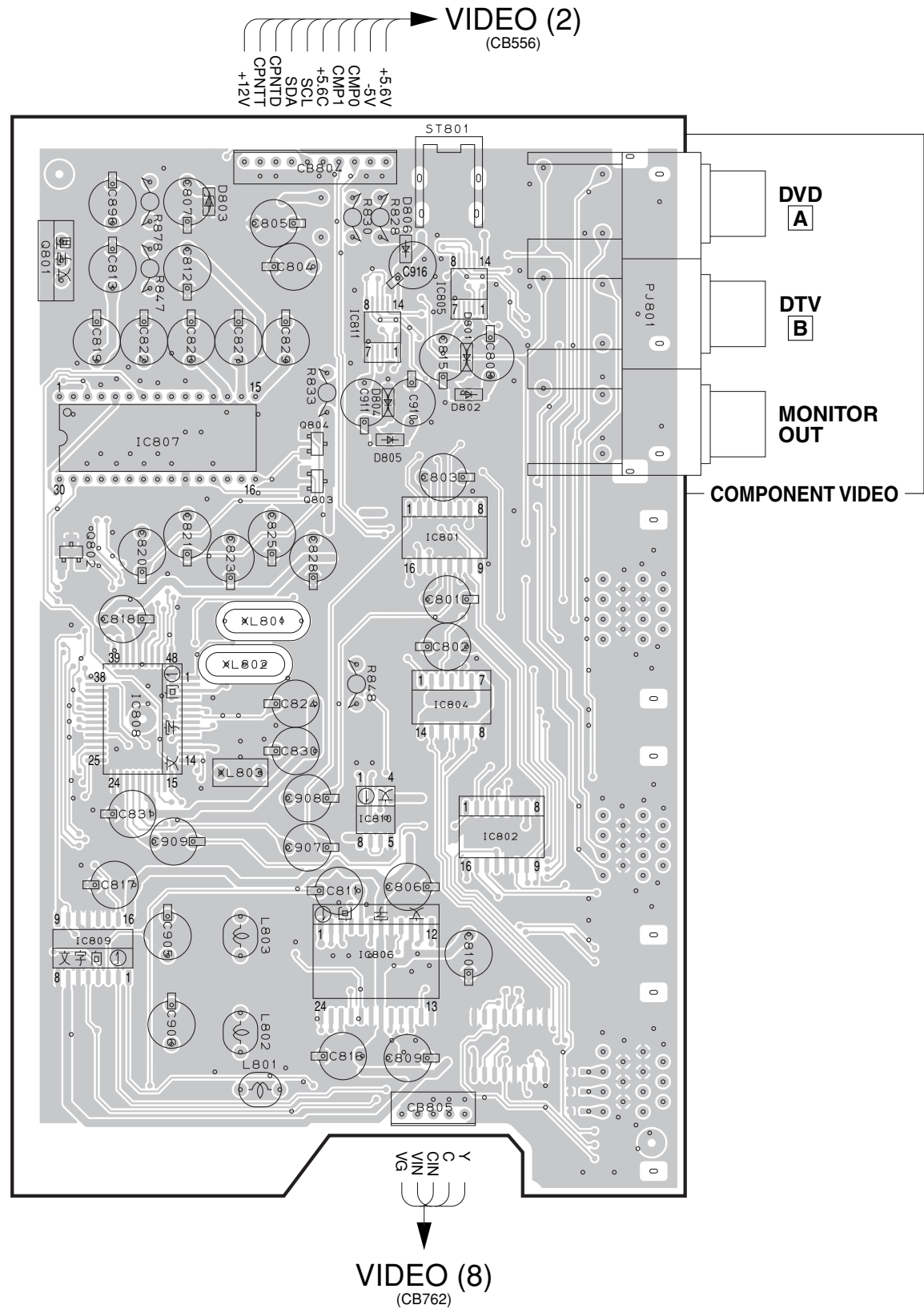
VIDEO (5) P.C.B. (Side B) Lead Free Solder Used



PRINTED CIRCUIT BOARD (Foil side)

CONVERSION P.C.B. (Side A) Lead Solder Used

CONVERSION P.C.B. (Side B) Lead Free Solder Used



• Semiconductor Location

Ref. No.	Location
D801	C3
D802	C3
D803	B2
D804	C3
D805	C3
D806	C3
IC801	C4
IC802	C5
IC804	C4
IC805	C3
IC806	C5
IC807	B3
IC808	B5
IC809	A5
IC810	C5
IC811	C3
Q801	A3
Q802	A4
Q803	B4
Q804	B3
Q805	F6
Q806	F6
Q807	F6
Q808	E6
Q809	F5
Q810	E5
Q811	E6
Q812	E6
Q813	F6
Q814	F5

Circuit No.	U, C	A
C813, 819-823, 825, 827, 828, 868, 872, 874-877, 880, 887, 897	X	O
IC807	X	O
J801, 802	O	X
Q802-804	X	O
R847, 856-861, 863, 866, 867, 870	X	O
XL801	X	O

X: NOT USED  
O: USED / APPLICABLE